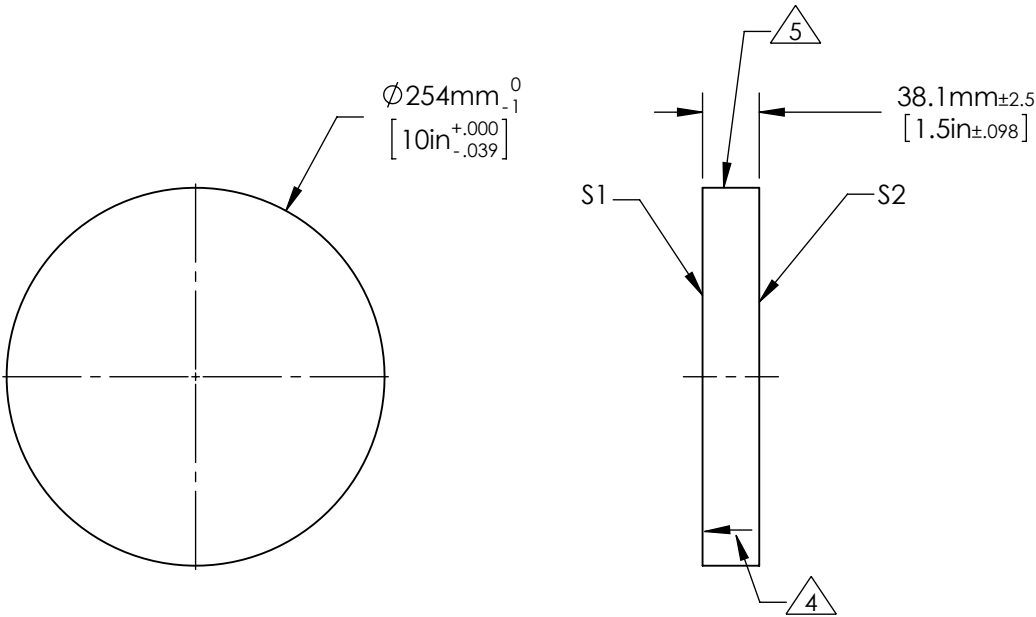


- NOTES:
- 1. ALLOWABLE OPTICAL MATERIAL:
SCHOTT: Fused Silica 458/678
 - 2. SURFACE S2 TO BE PARALLEL WITH SURFACE S1 TO < 3 ARCMIN
 - 3. COATING (APPLY ACROSS COATING APERTURE)
S1: ENHANCED ALUMINUM
Ravg ≥ 95% 450-650nm @ 0° AOI

- S2: NONE
4. ARROW ON EDGE POINTING TOWARDS SURFACE S1.
5. FINE GROUND SURFACE



FOR INFORMATION ONLY:
DO NOT MANUFACTURE PARTS TO THIS DRAWING

	S1	S2	EFL (AT 587.6nm)	NA	 Edmund Optics®	
SHAPE	PLANO	PLANO				
SURFACE ACCURACY AT 632.8nm	1/20 WAVE	NA			TITLE	1/20λ Optical Flat, Fused Silica, 10inch Diameter ENHANCED ALUMINUM
SURFACE QUALITY	60 - 40	COMMERCIAL POLISH	BFL (AT 587.6nm)	NA	DWG NO	65879-533
CLEAR APERTURE	ϕ 228.6	ϕ 228.6				
BEVEL MAX FACE	1.0 x 45°	1.0 x 45°	ALL DIMS IN	mm		