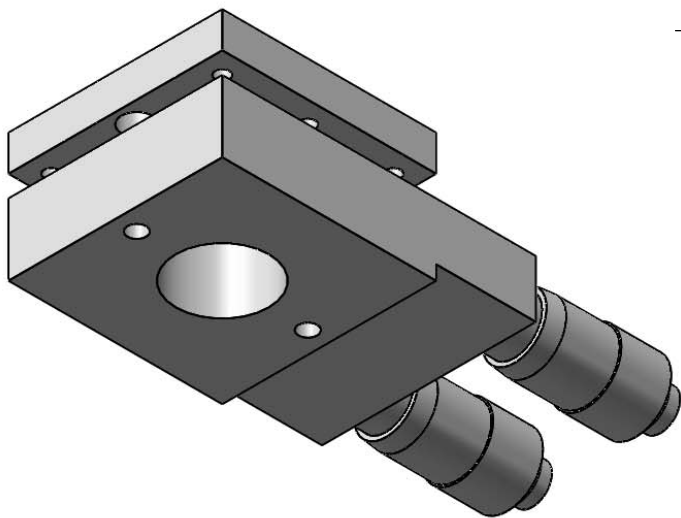
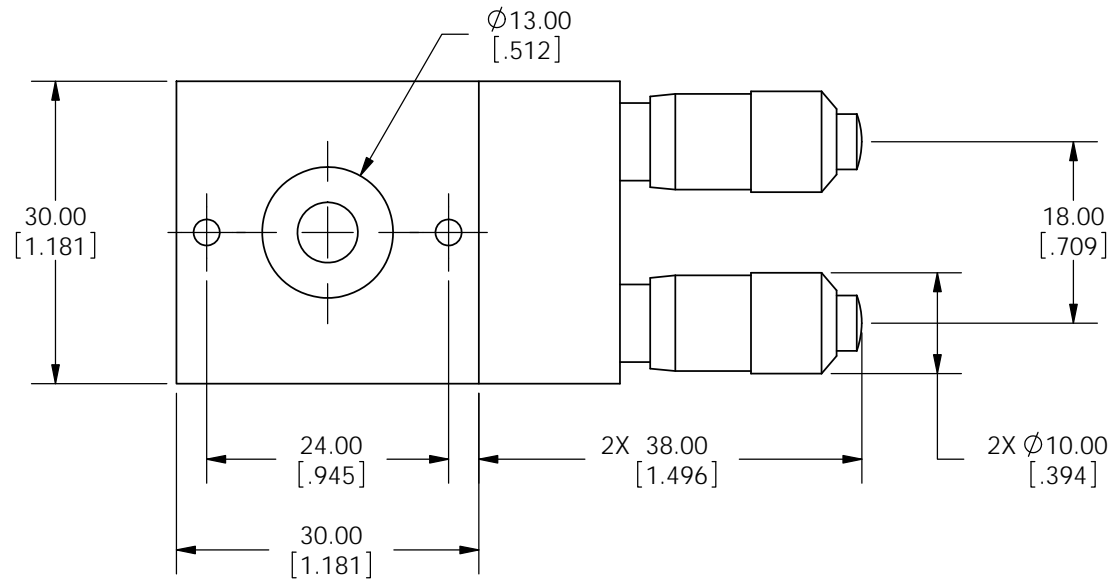
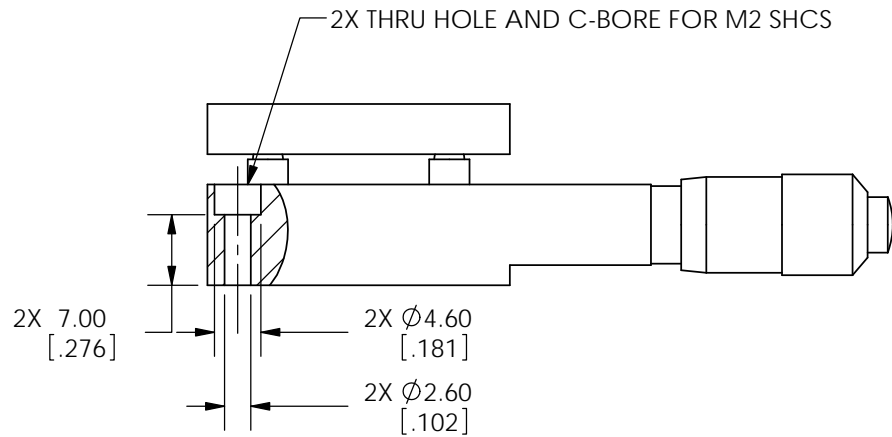
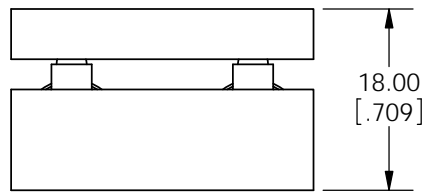


SPECIFICATIONS SUBJECT TO CHANGE WITHOUT NOTICE
 DIMENSIONS ARE FOR REFERENCE ONLY
 DIMENSIONS ARE IN mm [INCHES]



Edmund Optics

TITLE	30mm METRIC MICROMETER TILT STAGE		
DWG NO	66543	SHEET 1 OF 2	



SPECIFICATIONS SUBJECT TO CHANGE WITHOUT NOTICE
 DIMENSIONS ARE FOR REFERENCE ONLY
 DIMENSIONS ARE IN mm [INCHES]



Edmund Optics

TITLE	30mm METRIC MICROMETER TILT STAGE		
DWG NO	66543	SHEET 2 OF 2	

Enable 3D View