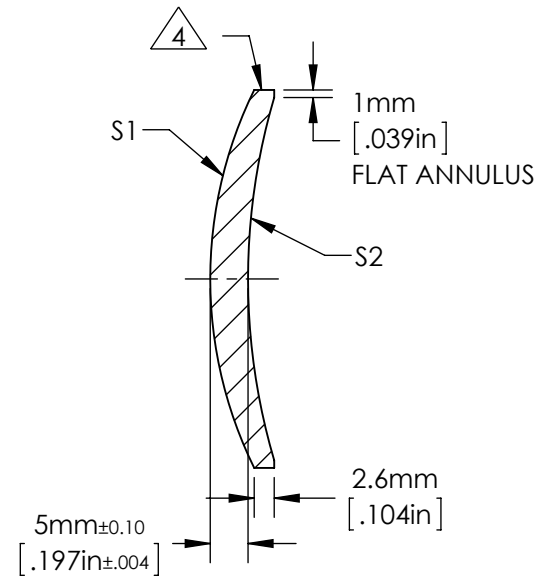
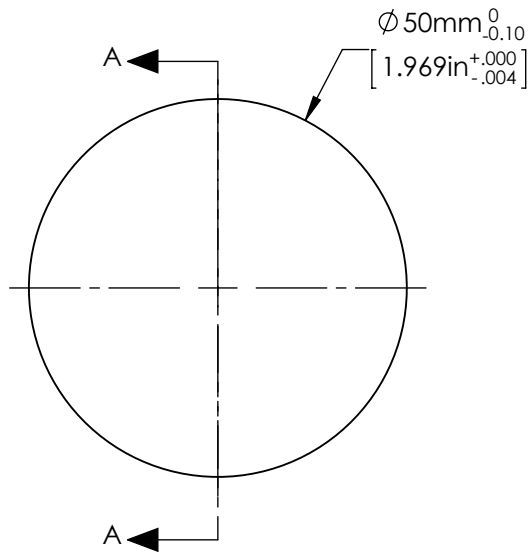


NOTES:

- 1. ALLOWABLE OPTICAL MATERIAL:  
OPTICAL GRADE GERMANIUM
- 2. CENTERING TOLERANCE (AT 587.6nm):  
BEAM DEVIATION: <3 ARCMINUTES
- 3. COATING (APPLY ACROSS COATING APERTURE)  
S1: NONE  
S2: NONE

4. EDGES DIAMOND TURNED



SECTION A-A

**FOR INFORMATION ONLY:  
DO NOT MANUFACTURE PARTS TO THIS DRAWING**

|                 | S1          | S2          | EFL<br>(AT 10.6μm) | (50.00) |  Edmund Optics® |  |
|-----------------|-------------|-------------|--------------------|---------|--|--|
| SHAPE           | CONVEX      | CONCAVE     | BFL<br>(AT 10.6μm) | (46.69) |  |  |
| RADIUS          | 56.64       | 84.91       | ALL DIMS IN        | mm      | TITLE  | ø50mm x 50mm FL, UNCOATED GERMANIUM<br>MENISCUS LENS |
| SURFACE QUALITY | 60 - 40     | 60 - 40     |                    |         | DWG NO   | 87958  |
| CLEAR APERTURE  | ≥ ø45.00    | ≥ ø45.00    |                    |         |  |  |
| BEVEL MAX FACE  | 0.3mm x 45° | 0.3mm x 45° |                    |         |  |  |