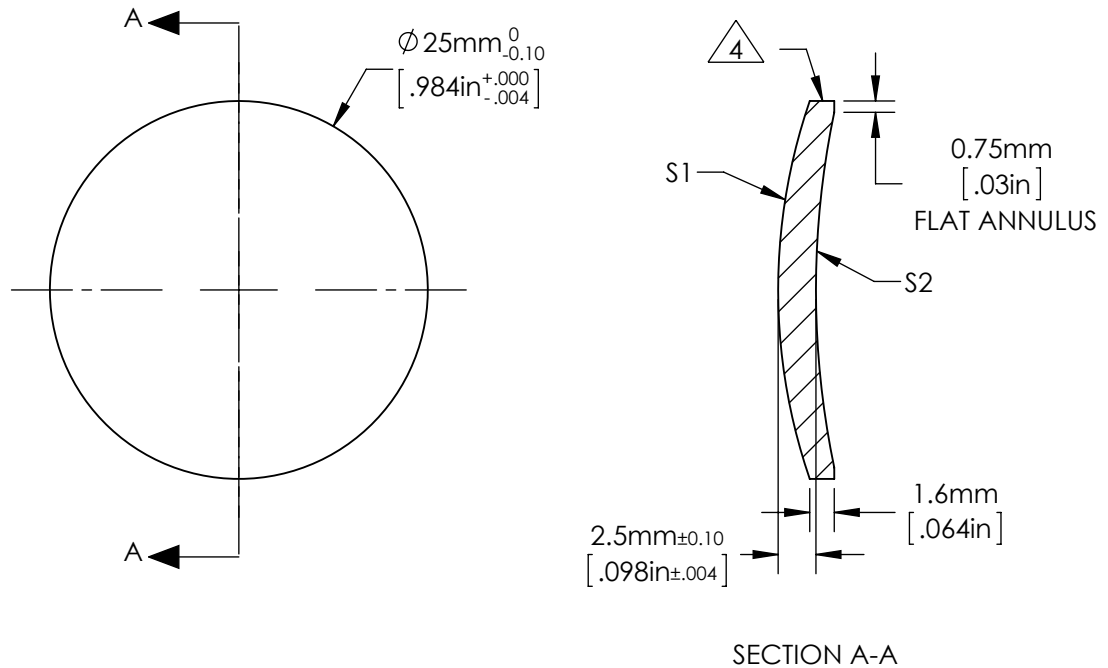


NOTES:

1. ALLOWABLE OPTICAL MATERIAL:
OPTICAL GRADE GERMANIUM
2. CENTERING TOLERANCE (AT 587.6nm):
BEAM DEVIATION: <3 ARCMINUTES
3. COATING (APPLY ACROSS COATING APERTURE)
S1 & S2: T(AVG) > 94% FROM 8.0-12.0µm
R(AVG) <1.0% FROM 8.0-12.0µm

4. EDGES DIAMOND TURNED



**FOR INFORMATION ONLY:
DO NOT MANUFACTURE PARTS TO THIS DRAWING**

	S1	S2			 Edmund Optics®	
SHAPE	CONVEX	CONCAVE	EFL (AT 10.6µm)	(35.00)		
RADIUS	38.43	57.61	BFL (AT 10.6µm)	(33.29)	TITLE ø25mm x 35mm FL, 8-12µm COATED GERMANIUM MENISCUS LENS	
SURFACE QUALITY	60 - 40	60 - 40				
CLEAR APERTURE	≥ ø22.50	≥ ø22.50	ALL DIMS IN	mm	DWG NO	87969
BEVEL MAX FACE	0.3mm x 45°	0.3mm x 45°				