

NOTES:

1. SUBSTRATE MATERIAL: BOROFLOAT®

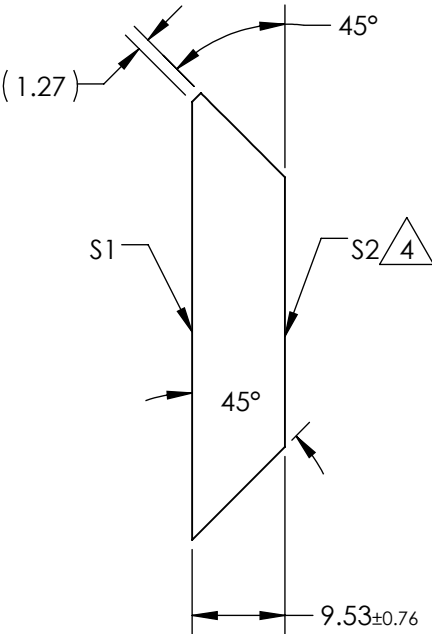
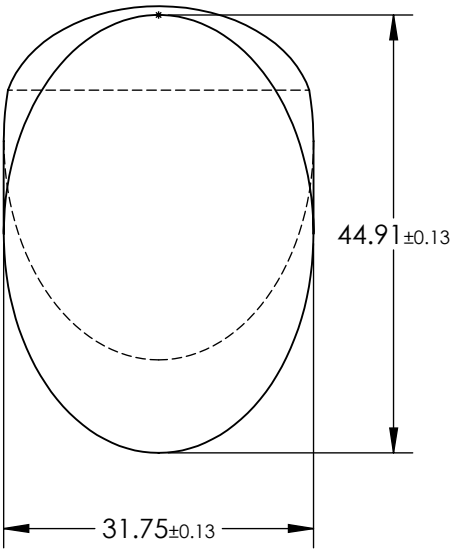
2. COATING (APPLY ACROSS CLEAR APERTURE)

S1: R(AVG) >89% @ 250 - 450nm
R(AVG) >85% @ 250 - 700nm

S2: NONE


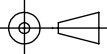
3. FINE GRIND SURFACE

4. RoHS COMPLIANT



**FOR INFORMATION ONLY:
DO NOT MANUFACTURE
PARTS TO THIS DRAWING**

SPECIFICATIONS SUBJECT TO CHANGE WITHOUT NOTICE
DIMENSIONS ARE FOR REFERENCE ONLY

	S1	S2	 Edmund Optics®			
TYPE	PLANO	PLANO				
CLEAR APERTURE (mm)	40.41 x 28.56	N/A				
SURFACE QUALITY	60-40	N/A				
SURFACE FLATNESS	λ/8	N/A				
BEVEL	PROTECTIVE AS NEEDED	PROTECTIVE AS NEEDED	ALL DIMS IN	mm	TITLE	31.75mm, MINOR AXIS UV ENHANCED ALUMINUM ELLIPTICAL MIRROR
			DWG NO		43576	SHEET 1 OF 1