

NOTES:

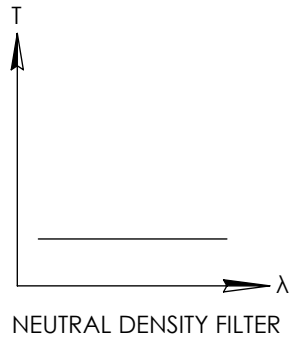
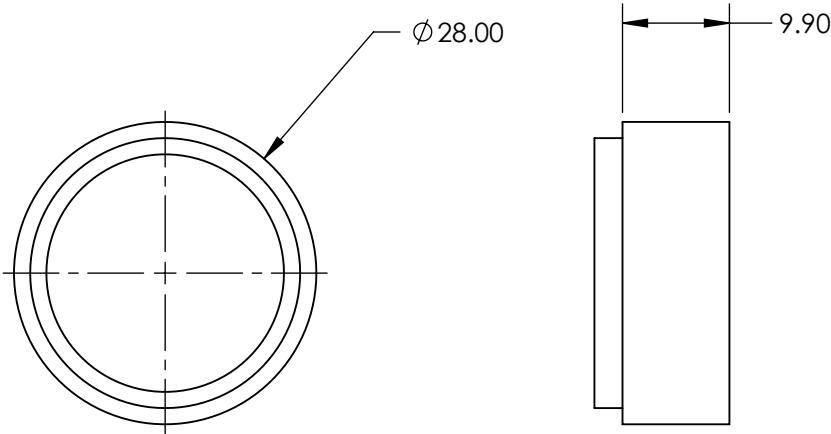
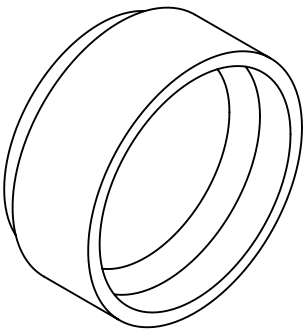
- 1. SUBSTRATE
- 2. SURFACE S2 TO BE PARALLEL WITH SURFACE S1 TO WITHIN 5 arcsec

3. FINE GRIND SURFACE

4. POWER, IRREGULARITY, AND SURFACE QUALITY SPECIFICATIONS
APPLY ACROSS CLEAR APERTURE

5. ROHS COMPLIANT

**FOR INFORMATION ONLY:
DO NOT MANUFACTURE
PARTS TO THIS DRAWING**



SPECIFICATIONS SUBJECT TO CHANGE WITHOUT NOTICE
DIMENSIONS ARE FOR REFERENCE ONLY

| | | |
|------------------|----------------------|----------------------|
| | S1 | S2 |
| SHAPE | PLANO | PLANO |
| CLEAR APERTURE | 22 | 22 |
| COATING APERTURE | UNCOATED | UNCOATED |
| BEVEL | PROTECTIVE AS NEEDED | PROTECTIVE AS NEEDED |

| | | | | | | | |
|------------------------|--|----|--|--------|--|---|--|
| | | | | TITLE | | M25.5 x 0.5, OD 2, 400 - 700nm ABSORPTIVE ND FILTER | |
| THIRD ANGLE PROJECTION | | | | DWG NO | | 66711 | |
| ALL DIMS IN | | mm | | | | SHEET 1 OF 1 | |