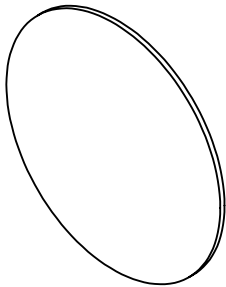


NOTES:

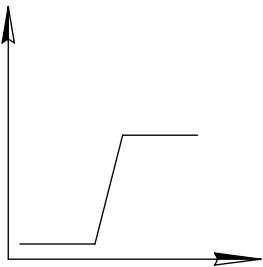
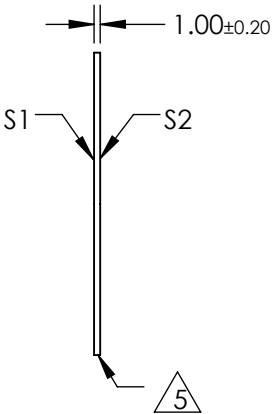
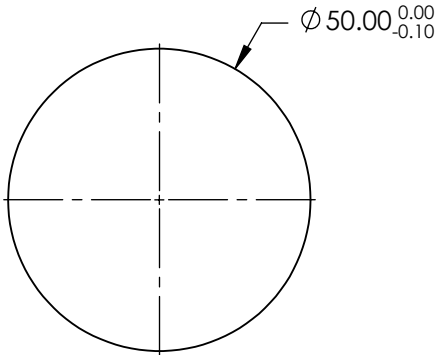
**FOR INFORMATION ONLY:  
DO NOT MANUFACTURE  
PARTS TO THIS DRAWING**



- 1. SUBSTRATE:  
GERMANIUM (GE)
- 2. SURFACE S2 TO BE PARALLEL TO SURFACE S1 TO WITHIN <10 arcmin
- 3. TRANSMISSION (%): >85%
- 4. CUT-ON WAVELENGTH: 2.40.0µm

 FINE GRIND SURFACE

- 6. POWER, IRREGULARITY, AND SURFACE QUALITY SPECIFICATION APPLY  
ACROSS CLEAR APERTURE
- 7. RoHS: COMPLIANT



LONGPASS FILTER

SPECIFICATIONS SUBJECT TO CHANGE WITHOUT NOTICE  
DIMENSIONS ARE FOR REFERENCE ONLY

Rev. A	S1	S2
SHAPE	PLANO	PLANO
SURFACE QUALITY	80-50	80-50
COATING APERTURE	Ø45	Ø45
SURFACE FLATNESS	3 - 5λ	3 - 5λ
BEVEL	PROTECTIVE AS NEEDED	PROTECTIVE AS NEEDED



ALL DIMS IN

mm

 **Edmund Optics®**

TITLE    Ø50mm, 2.40µm, INFRARED LONGPASS FILTER

DWG NO    68659

SHEET  
1 OF 1