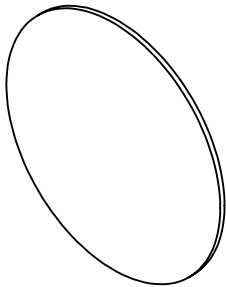


NOTES:

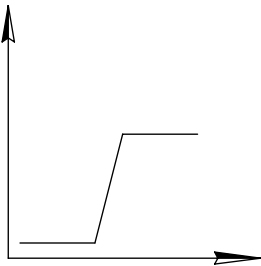
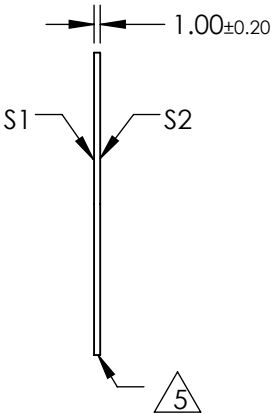
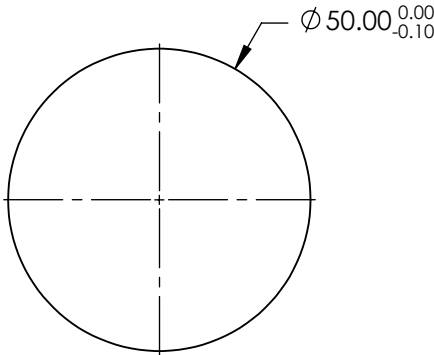
**FOR INFORMATION ONLY:
DO NOT MANUFACTURE
PARTS TO THIS DRAWING**



- 1. SUBSTRATE:
GERMANIUM (GE)
- 2. SURFACE S2 TO BE PARALLEL TO SURFACE S1 TO WITHIN <10 arcmin
- 3. TRANSMISSION (%): >85%
- 4. CUT-ON WAVELENGTH: 4.50.0µm

 FINE GRIND SURFACE


- 6. POWER, IRREGULARITY, AND SURFACE QUALITY SPECIFICATION APPLY
ACROSS CLEAR APERTURE
- 7. RoHS: COMPLIANT

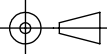


LONGPASS FILTER

SPECIFICATIONS SUBJECT TO CHANGE WITHOUT NOTICE
DIMENSIONS ARE FOR REFERENCE ONLY

Rev. A	S1	S2
SHAPE	PLANO	PLANO
SURFACE QUALITY	80-50	80-50
COATING APERTURE	Ø45	Ø45
SURFACE FLATNESS	3 - 5λ	3 - 5λ
BEVEL	PROTECTIVE AS NEEDED	PROTECTIVE AS NEEDED



 THIRD ANGLE PROJECTION	TITLE	Ø50mm, 4.50µm, INFRARED LONGPASS FILTER	
	DWG NO	68661	SHEET 1 OF 1