

NOTES:

1. SUBSTRATE MATERIAL:
ALUMINUM

2. FINISH (EXCEPT SURFACE S1):
BLACK ANODIZED

3. COATING (APPLY ACROSS CLEAR APERTURE)

S1: PROTECTED ALUMINUM

R(AVG) >85% @ 400 - 700nm

R(AVG) >97% @ 800 - 2000nm

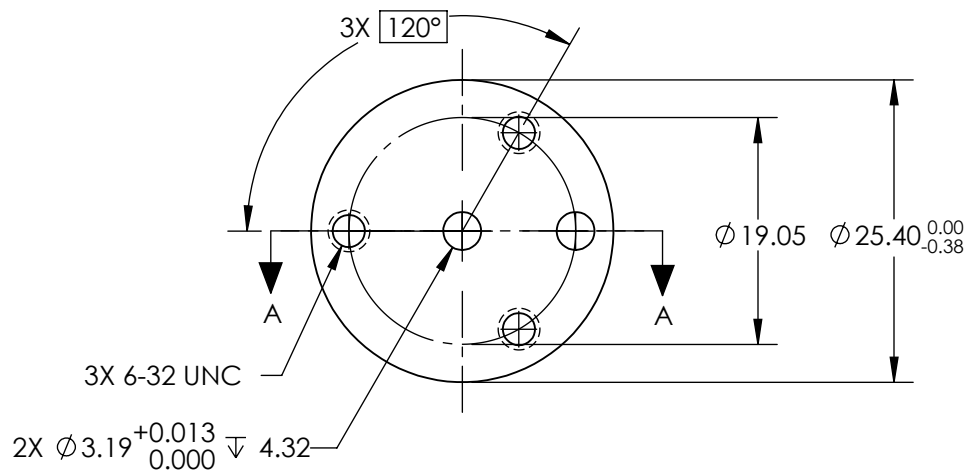
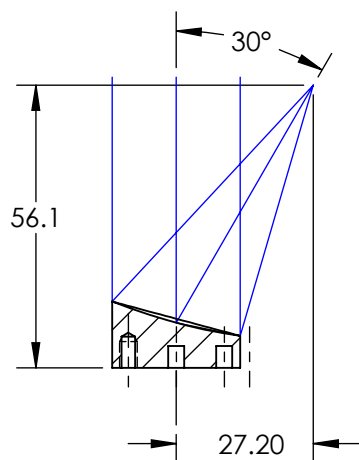
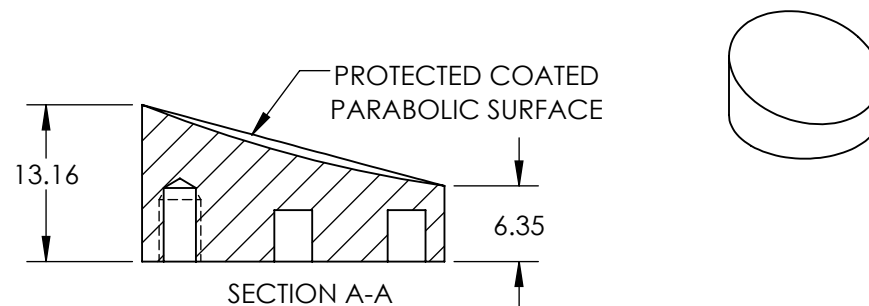
R(AVG) >97% @ 2000 - 12000nm

SURFACE ROUGHNESS : <175 Å RMS

4. FOCAL LENGTH TOLERANCE: ±1%

5. ROHS COMPLIANT

**FOR INFORMATION ONLY:
DO NOT MANUFACTURE
PARTS TO THIS DRAWING**



SPECIFICATIONS SUBJECT TO CHANGE WITHOUT NOTICE
DIMENSIONS ARE FOR REFERENCE ONLY

REV. A	S1
SHAPE	PARABOLIC
REFLECTIVE WAVEFRONT DISTORTION AT 632.8nm (RMS)	$\lambda/4$
SURFACE FIGURE AT 632.8nm (RMS)	$\lambda/8$
CLEAR APERTURE	90%
BEVEL	PROTECTIVE AS NEEDED

Edmund Optics®



THIRD ANGLE
PROJECTION

TITLE

Ø25.4 X 54.4mm EFL 30° OAP PROTECTED
ALUMINUM MIRROR 100Å

ALL DIMS IN

mm

DWG NO

47085

SHEET
1 OF 1