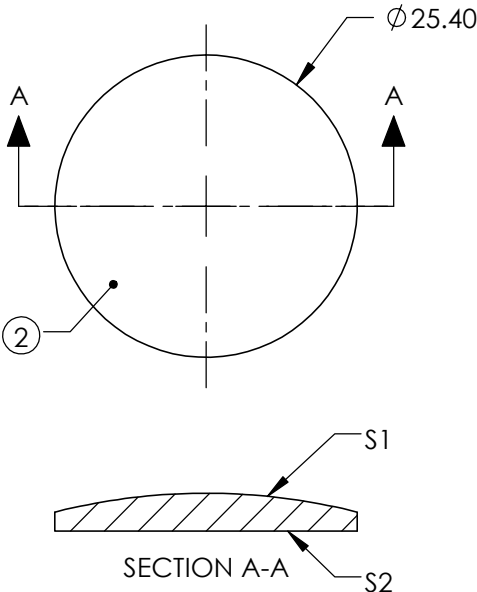
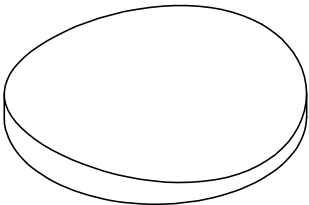



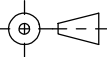
NOTES:

- 1. SUBSTRATE:  
GRADE A FINE ANNEALED
- ② COATING (APPLY ACROSS COATING APERTURE)  
R(ABS) ≤ 1.5% FROM 750-800nm @ 0° AOI  
R(ABS) ≤ 1.0% FROM 800-1550nm @ 0° AOI  
R(AVG) ≤ 0.7% FROM 750-1550nm @ 0° AOI
- 3. CENTERING TOLERANCE (AT 587.6nm):  
PLANO AXIS WEDGE: < 5 ARCMIN  
POWER AXIS WEDGE: < 5 ARCMIN
- △ 4. FINE GRIND SURFACE
- 5. POWER, IRREGULARITY, AND SURFACE QUALITY  
SPECIFICATIONS APPLY ACROSS CLEAR APERTURE
- 6. FOCAL LENGHT (EFL): 100nm  
BACK FOCAL LENGTH (BFL): 97.92nm
- 7. RoHS COMPLIANT



**FOR INFORMATION ONLY:  
DO NOT MANUFACTURE  
PARTS TO THIS DRAWING**

SPECIFICATIONS SUBJECT TO CHANGE WITHOUT NOTICE  
DIMENSIONS ARE FOR REFERENCE ONLY

	S1	S2				
SHAPE	CONVEX	PLANO				
SURFACE QUALITY	40 - 20	40 - 20				
CLEAR APERTURE	Ø22.86	Ø22.86	TITLE			
BEVEL	PROTECTIVE AS NEEDED	PROTECTIVE AS NEEDED	ALL DIMS IN	mm	DWG NO	34633
					LENS PCX CYL Ø25.4 x 100 EFL NIR II	
					SHEET	1 OF 1