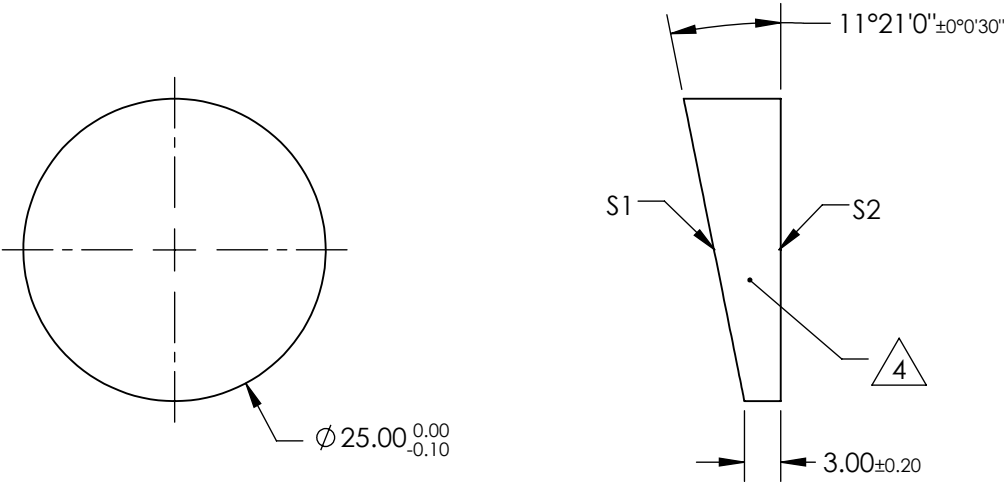


NOTES:

- 1. SUBSTRATE MATERIAL: N-BK7
- 2. ONLY ROHS-COMPLIANT MATERIALS ARE ACCEPTABLE.  
DO NOT SUBSTITUTE WITH ROHS EXEMPT OR NON-COMPLIANT MATERIALS
- 3. COATING (APPLY ACROSS CLEAR APERTURE)  
S1 & S2 : UNCOATED
- 4. FINE GRIND SURFACE
- 5. POWER, IRREGULARITY, AND SURFACE QUALITY SPECIFICATIONS APPLY ACROSS CLEAR APERTURE
- 6. CHIPS OUTSIDE OF CLEAR APERTURE: <0.5
- 7. CLEAR APERTURE AND COATING APERTURE ARE CENTERED ON SURFACES



**FOR INFORMATION ONLY:  
DO NOT MANUFACTURE  
PARTS TO THIS DRAWING**

	S1 & S2
SHAPE	PLANO
POWER (DIOPTERS)	10.51
ANGLE TOL. (ARCSEC)	$\pm 30$
SURFACE QUALITY	20-10
SURFACE FLATNESS	$\lambda/10$
WAVELENGTH RANGE (nm)	350 - 2200
CLEAR APERTURE	$\phi 22.50$
IMAGE ORIENTATION	BEAM DEVIATION
BEVEL	PROTECTIVE AS NEEDED

SPECIFICATIONS SUBJECT TO CHANGE WITHOUT NOTICE  
DIMENSIONS ARE FOR REFERENCE ONLY

**Edmund Optics®**



TITLE

6° NOM. UNCOATED, WEDGE PRISM

ALL DIMS IN

mm

DWG NO

45556

SHEET  
1 OF 1