

NOTES:

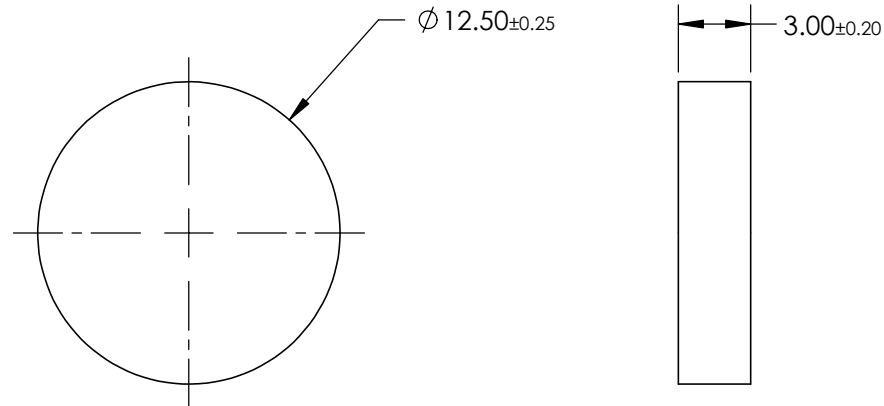
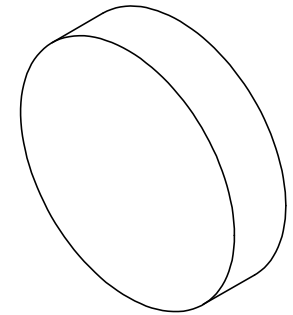
1. SUBSTRATE:
2. SURFACE S2 TO BE PARALLEL WITH S1 TO WITHIN <1 ARCMIN
3. COATING (APPLY ACROSS CLEAR APERTURE)  
PERFORMANCE SPECIFICATIONS:  
R(ABS) = 50% @ 495 & 605nm; R(AVG) > 98% @ 400 - 465nm & 635 - 725nm  
S1: MULTI-LAYER DICHROIC  
S2: SINGLE LAYER MgF2

4. FINE GRIND SURFACE

5. POWER, IRREGULARITY, AND SURFACE QUALITY  
SPECIFICATIONS APPLY ACROSS CLEAR APERTURE

6. ROHS COMPLIANT

**FOR INFORMATION ONLY:  
DO NOT MANUFACTURE  
PARTS TO THIS DRAWING**



|                    | S1                  | S2                  |
|--------------------|---------------------|---------------------|
| SHAPE              | PLANO               | PLANO               |
| CUT-OFF WAVELENGTH | 495nm               | 495nm               |
| CUT-ON WAVELENGTH  | 605nm               | 605nm               |
| SURFACE QUALITY    | 60-40               | 60-40               |
| SURFACE FLATNESS   | $\lambda/4$         | $\lambda/4$         |
| COATING TYPE       | TRADITIONAL COATED  | TRADITIONAL COATED  |
| BEVEL              | PROTECTED AS NEEDED | PROTECTED AS NEEDED |

SPECIFICATIONS SUBJECT TO CHANGE WITHOUT NOTICE  
DIMENSIONS ARE FOR REFERENCE ONLY



**Edmund Optics®**



THIRD ANGLE  
PROJECTION

TITLE

Ø12.5mm, 45° MAGENTA DICHROIC FILTER

ALL DIMS IN

mm

DWG NO

66244

SHEET  
1 OF 1