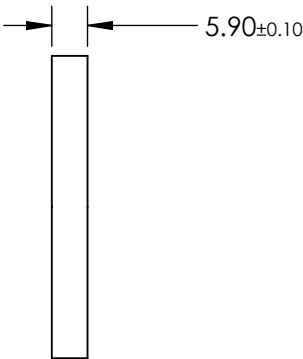
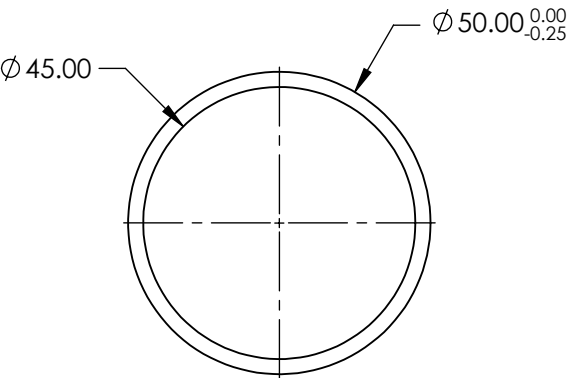
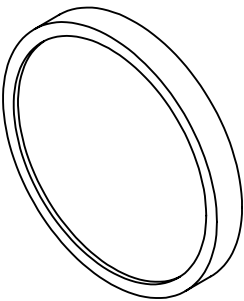


**FOR INFORMATION ONLY:  
DO NOT MANUFACTURE  
PARTS TO THIS DRAWING**



BANDPASS FILTER

|                            | VALUE                          |
|----------------------------|--------------------------------|
| OPTICAL DENSITY            | ≥4.0                           |
| CENTER WAVELENGTH (CWL)    | 710 +3.0/-1.0 nm               |
| FULL WIDTH HALF MAX (FWHM) | 10 ±2 nm                       |
| MINIMUM TRANSMISSION       | >55 %                          |
| BLOCKING                   | 200 - Far IR                   |
| SURFACE QUALITY            | 80-50                          |
| CONSTRUCTION               | MOUNTED IN BLACK ANODIZED RING |
| COATING TYPE               | TRADITIONAL COATED             |

SPECIFICATIONS SUBJECT TO CHANGE WITHOUT NOTICE  
DIMENSIONS ARE FOR REFERENCE ONLY



ALL DIMS IN

mm

TITLE

Ø50mm, 710nm x 10nm, MOUNTED  
BANDPASS FILTER

DWG NO

67906

SHEET  
1 OF 1