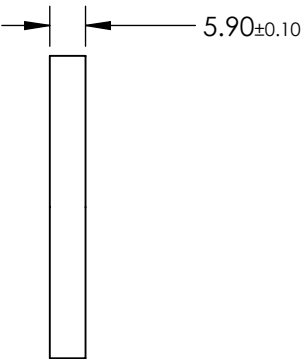
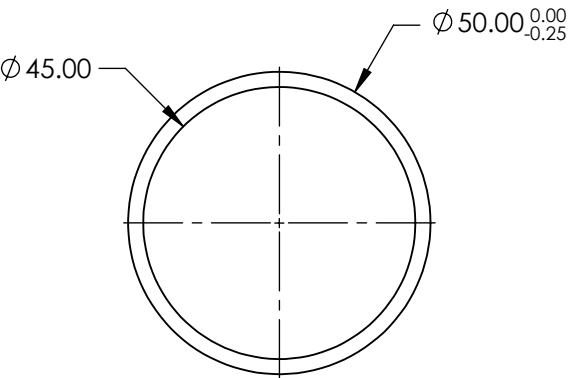
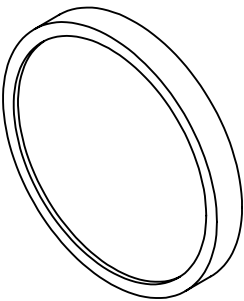


**FOR INFORMATION ONLY:
DO NOT MANUFACTURE
PARTS TO THIS DRAWING**



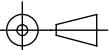
BANDPASS FILTER

| | VALUE |
|----------------------------|--------------------------------|
| OPTICAL DENSITY | ≥4.0 |
| CENTER WAVELENGTH (CWL) | 860 +3.0/-1.0 nm |
| FULL WIDTH HALF MAX (FWHM) | 10 ±2 nm |
| MINIMUM TRANSMISSION | >50 % |
| BLOCKING | 200 - Far IR |
| SURFACE QUALITY | 80-50 |
| CONSTRUCTION | MOUNTED IN BLACK ANODIZED RING |
| COATING TYPE | TRADITIONAL COATED |

SPECIFICATIONS SUBJECT TO CHANGE WITHOUT NOTICE
DIMENSIONS ARE FOR REFERENCE ONLY

EO[®] Edmund Optics[®]

THIRD ANGLE
PROJECTION



TITLE

Ø50mm, 860nm x 10nm, MOUNTED
BANDPASS FILTER

DWG NO

67921

ALL DIMS IN

mm

SHEET
1 OF 1