

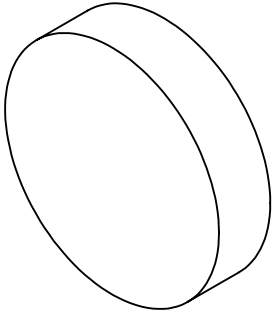
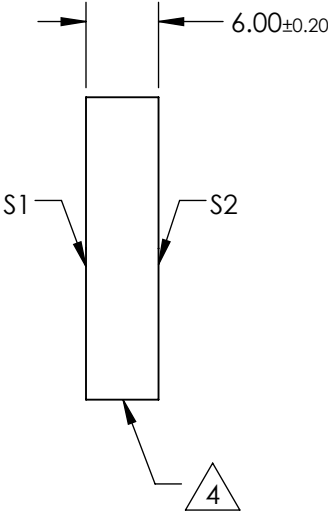
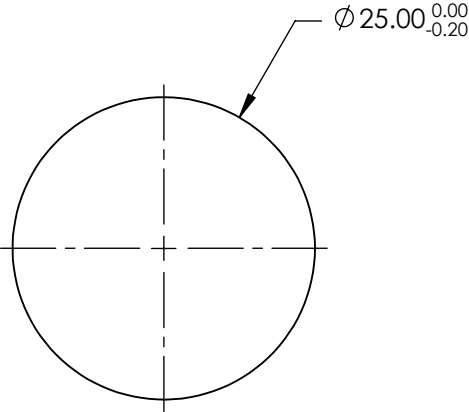
NOTES:

1. SUBSTRATE
- FUSED SILICA
2. SURFACE S2 TO BE PARALLEL WITH S1 WITHIN < 3 ARCMIN
3. COATING (APPLY ACROSS CLEAR APERTURE)
- S1: Laser Mirror (1064nm)
- R(ABS) >99.8% @ 1064nm @ 0-45° AOI
- DAMAGE THRESHOLD,
PULSED: 15 J/cm² @ 1064nm, 20ns, 20Hz
- S2: NONE

4. FINE GROUND SURFACE

5. POWER, IRREGULARITY, SURFACE QUALITY, AND COATING SPECIFICATIONS APPLY ACROSS CLEAR APERTURE
6. RoHS COMPLIANT

**FOR INFORMATION ONLY:
DO NOT MANUFACTURE
PARTS TO THIS DRAWING**



SPECIFICATIONS SUBJECT TO CHANGE WITHOUT NOTICE
DIMENSIONS ARE FOR REFERENCE ONLY

	S1	S2
SHAPE	PLANO	PLANO
SURFACE FLATNESS	$\lambda/10$	N/A
SURFACE QUALITY	10-5	FINE GROUND
CLEAR APERTURE	Ø22.5	N/A
BEVEL	PROTECTIVE AS NEEDED	PROTECTIVE AS NEEDED



ALL DIMS IN mm

EO® Edmund Optics®

TITLE

Ø25mm, 1064nm, 0 - 45°, ND:YAG LASER LINE MIRROR

DWG NO

88533

SHEET
1 OF 1