

NOTES:

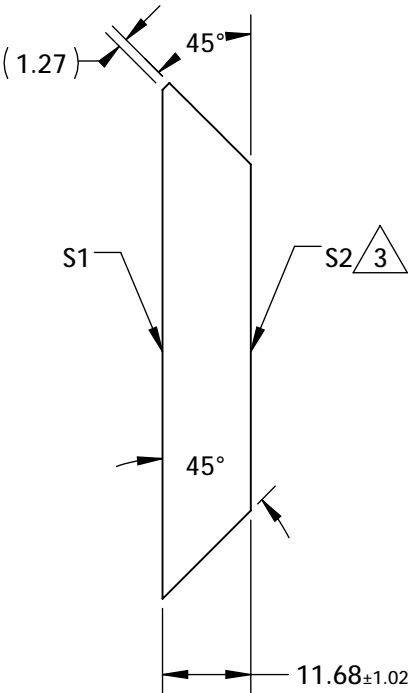
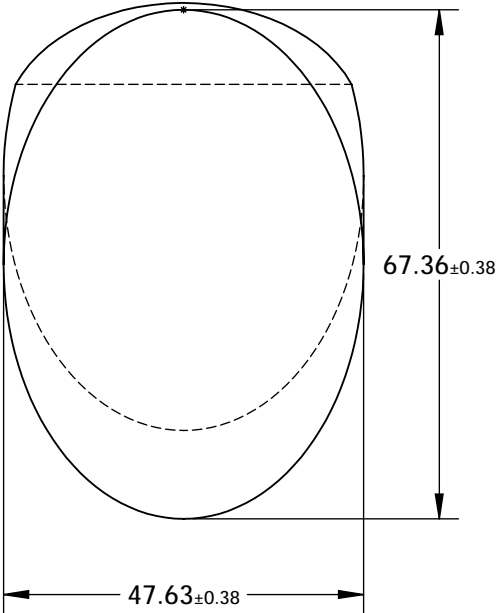
1. SUBSTRATE MATERIAL: BOROFLOAT®

2. COATING (APPLY ACROSS CLEAR APERTURE)

S1: R(AVG) >89% @ 250 - 450nm
R(AVG) >85% @ 250 - 700nm
S2: NONE

3. FINE GRIND SURFACE

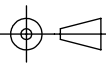

4. RoHS COMPLIANT



**FOR INFORMATION ONLY:
DO NOT MANUFACTURE
PARTS TO THIS DRAWING**

SPECIFICATIONS SUBJECT TO CHANGE WITHOUT NOTICE
DIMENSIONS ARE FOR REFERENCE ONLY

	S1	S2
TYPE	PLANO	PLANO
CLEAR APERTURE (mm)	60.63 x 42.88	N/A
SURFACE QUALITY	60-40	N/A
SURFACE FLATNESS	λ/8	N/A
BEVEL	PROTECTIVE AS NEEDED	PROTECTIVE AS NEEDED

THIRD ANGLE PROJECTION 			
TITLE		47.63mm, MINOR AXIS UV ENHANCED ALUMINUM ELLIPTICAL MIRROR	
ALL DIMS IN	mm	DWG NO	43578
		SHEET 1 OF 1	