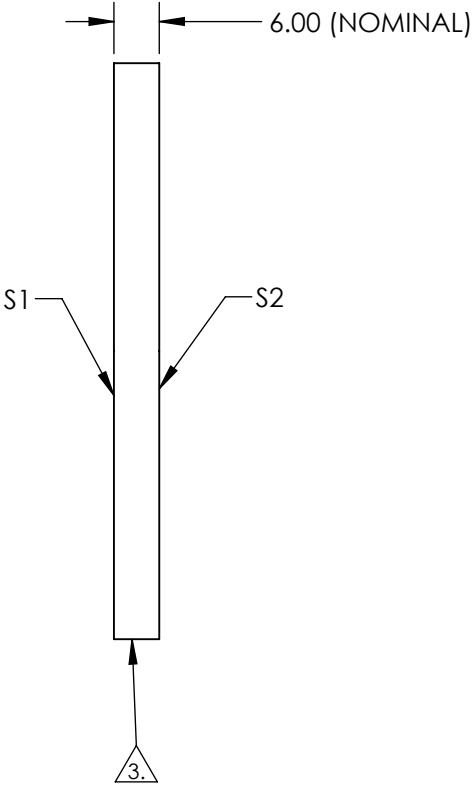
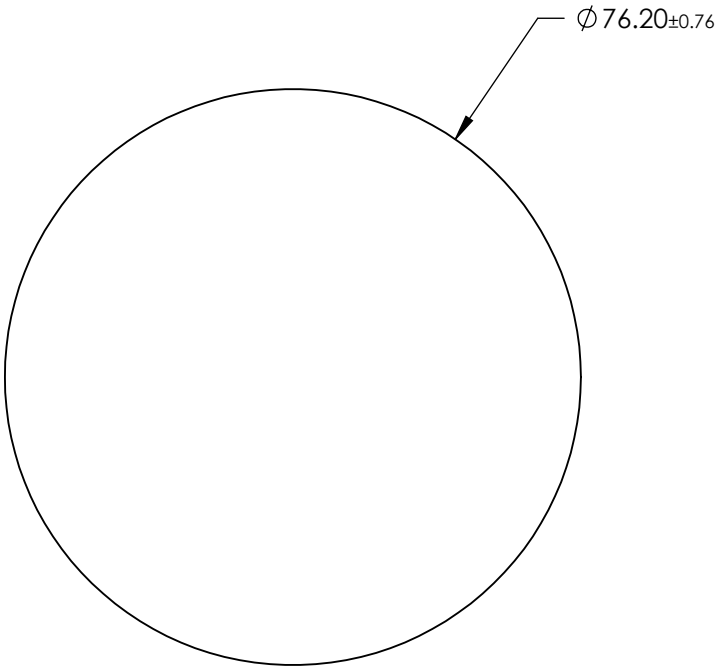


NOTES:

- 1. SUBSTRATE: Float Glass
- 2. COATING (APPLY ACROSS CLEAR APERTURE)
 - S1: Protected Aluminum (400-700nm)
 - R(AVG) >85% @ 400 - 700nm @ 45°
- S2: NONE
- 3. GROUND EDGES
- 4. RoHS COMPLIANT




**FOR INFORMATION ONLY:
DO NOT MANUFACTURE
PARTS TO THIS DRAWING**

SPECIFICATIONS SUBJECT TO CHANGE WITHOUT NOTICE
DIMENSIONS ARE FOR REFERENCE ONLY

	S1	S2
SHAPE	PLANO	PLANO
SURFACE QUALITY	80-50	N/A
SURFACE FLATNESS	4 - 6λ	N/A
CLEAR APERTURE	Ø 68.58	N/A
BEVEL	PROTECTED AS NEEDED	PROTECTED AS NEEDED

THIRD ANGLE
PROJECTION

ALL DIMS IN mm

 **Edmund Optics®**

TITLE	76.2mm Diameter, 4-6λ Mirror		
DWG NO	69251	SHEET 1 OF 1	