

NOTES:

1. SUBSTRATE: N-BK7

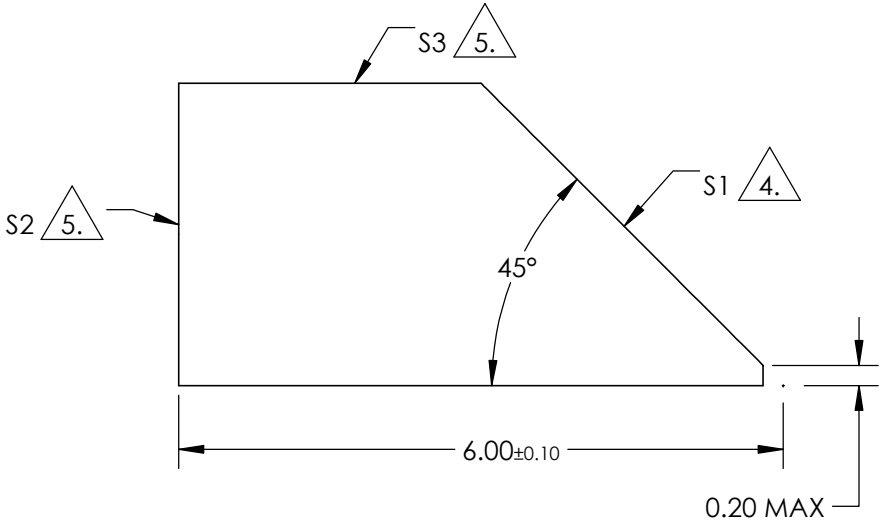
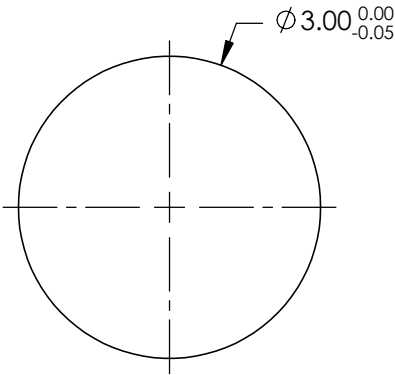
2. COATING

S1: PROTECTED ALUMINUM  
R(avg) >85% @ 400 - 700nm  
DENSITY LIMIT : 0.3 J/cm² @ 532nm & 1064nm, 10ns  
S2: UNCOATED  
S3: UNCOATED

3. RoHS COMPLIANT

4. POLISHED SURFACE

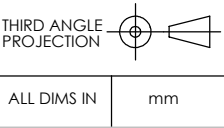
5. FINE GRIND SURFACE



**FOR INFORMATION ONLY:  
DO NOT MANUFACTURE  
PARTS TO THIS DRAWING**

SPECIFICATIONS SUBJECT TO CHANGE WITHOUT NOTICE  
DIMENSIONS ARE FOR REFERENCE ONLY

REV. A	S1	S2, S3
ANGLE TOLERANCE (arcmin)	±10	±10
WAVELENGTH RANGE (nm)	400 - 700	N/A
SURFACE QUALITY	40-20	N/A
BEVEL	PROTECTIVE AS NEEDED	PROTECTIVE AS NEEDED



**Edmund Optics®**

TITLE	Ø3mm, 45°, ALUMINUM COATED, ROD LENS
DWG NO	54094
SHEET	1 OF 1