

NOTES:  
1. SUBSTRATE: GRADE A FINE ANNEALED  
ZEONEX: E48R  
nd=1.531  
vd=56.0

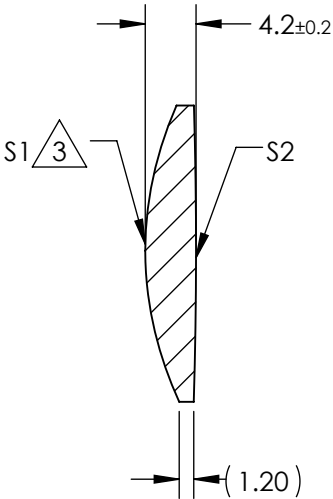
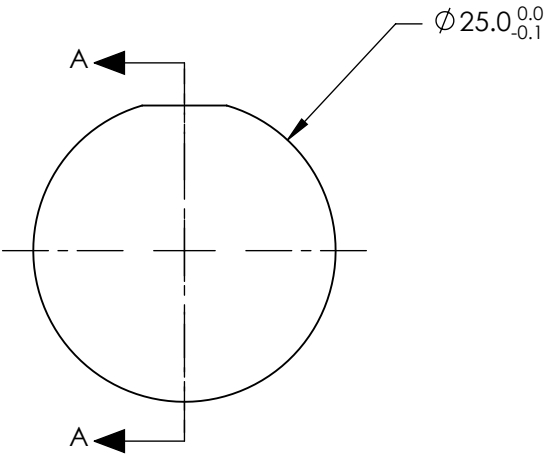
2. COATING

S1: R(avg) <0.7% @ 600 - 1000nm  
S2: R(avg) <0.7% @ 600 - 1000nm

3. ASPHERIC SURFACE DESCRIBED BY (REF. COEFFICIENT TABLE)

$$Z_{ASPH}(Y) = \frac{(\frac{1}{RADIUS}) * Y^2}{1 + \sqrt{1 - (1 + k) * (\frac{1}{RADIUS})^2 * Y^2}} + D * Y^2 + E * Y^4 + F * Y^6 + G * Y^8 + H * Y^{10} + J * Y^{12} + L * Y^{14}$$

FOR INFORMATION ONLY:  
DO NOT MANUFACTURE  
PARTS TO THIS DRAWING



SECTION A-A

| COEFFICIENT TABLE |                 |
|-------------------|-----------------|
| COEFFICIENT       | S1              |
| k                 | -1.4            |
| D                 | 0               |
| E                 | 4.0480008E-006  |
| F                 | -5.4616529E-010 |
| G                 | 0               |
| H                 | 0               |
| J                 | 0               |
| L                 | 0               |

|                 |                      |                      |   |       |  |  |              |
|-----------------|----------------------|----------------------|---|-------|--|--|--------------|
| REV. A          | S1                   | S2                   | EFL @ 587.6nm   | 50    |  Edmund Optics® |  |              |
| SHAPE           | CONVEX               | CONVEX               | BFL @ 587.6nm   | 47.41 |  |  |              |
| RADIUS          | 28.28                | 412.00               |  |       | TITLE  | 25mm DIAMETER X 50mm FL, NIR COATED, PLASTIC ASPHERIC LENS |              |
| SURFACE QUALITY | 80-50                | 80-50                |   |       |  |  |              |
| CLEAR APERTURE  | Ø 23                 | Ø 23                 |  |       | TITLE  | 25mm DIAMETER X 50mm FL, NIR COATED, PLASTIC ASPHERIC LENS |              |
| BEVEL MAX       | PROTECTIVE AS NEEDED | PROTECTIVE AS NEEDED |   |       |  |  |              |
|                 |                      |                      | ALL DIMS IN   | mm    | DWG NO   | 66025  | SHEET 1 OF 1 |

SPECIFICATIONS SUBJECT TO CHANGE WITHOUT NOTICE DIMENSIONS ARE FOR REFERENCE ONLY