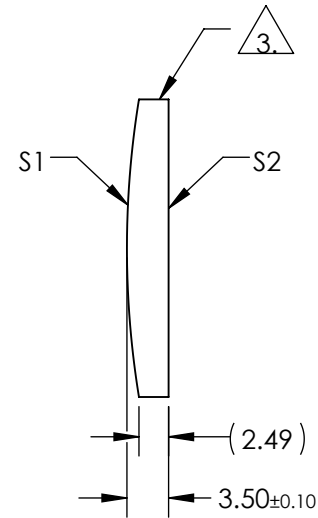
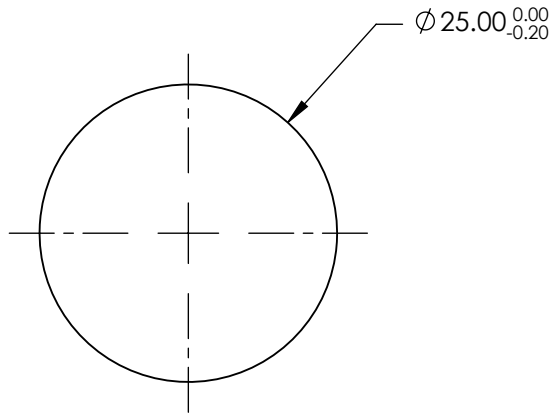



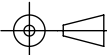
NOTES:

1. SUBSTRATE MATERIAL:
N-BK7
2. COATING (APPLY ACROSS CLEAR APERTURE)
- S1 & S2: VIS 0° (425-675nm)
R(AVG) ≤0.4% @ 425 - 675nm
3. FINE GROUND SURFACE
4. RoHS COMPLIANT



**FOR INFORMATION ONLY:
DO NOT MANUFACTURE
PARTS TO THIS DRAWING**

SPECIFICATIONS SUBJECT TO CHANGE WITHOUT NOTICE
DIMENSIONS ARE FOR REFERENCE ONLY

	S1	S2	EFL	150.00	 Edmund Optics®			
SHAPE	CONVEX	PLANO	BFL	147.7				
RADIUS	77.78	INFINITY			TITLE	25mm DIA X 150mm FL VIS 0° COATED, CYLINDER LENS		
SURFACE QUALITY	60-40	60-40						
CLEAR APERTURE	Ø24.00	Ø24.00			DWG NO	69731		
BEVEL	PROTECTIVE AS NEEDED	PROTECTIVE AS NEEDED						
			ALL DIMS IN	mm				
					SHEET 1 OF 1			