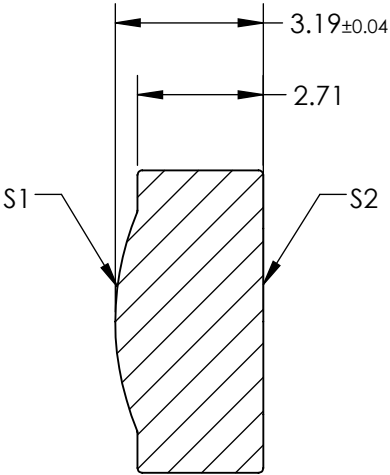
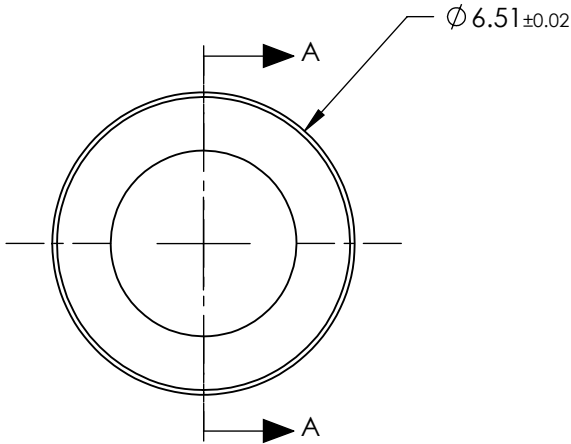


NOTES:

- 1. SUBSTRATE:
D-ZLAF52LA
- 2. NUMERICAL APERTURE: 0.30
- 3. COATING
S1 & S2: R(AVG) ≤ 0.5% @ 350 - 700nm
- 4. FOCAL LENGTH TOLERANCE: ±1%
- 5. TRANSMITTED WAVEFRONT ERROR (λ, RMS): < 0.050


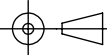


SECTION A-A

**FOR INFORMATION ONLY:
DO NOT MANUFACTURE
PARTS TO THIS DRAWING**

SPECIFICATIONS SUBJECT TO CHANGE WITHOUT NOTICE DIMENSIONS ARE FOR REFERENCE ONLY

	S1	S2
SHAPE	CONVEX	PLANO
SURFACE QUALITY	40-20	40-20
CLEAR APERTURE	$\varnothing 4.54$	$\varnothing 4.54$
BEVEL MAX	PROTECTIVE AS NEEDED	PROTECTIVE AS NEEDED

EFL	7.50	 Edmund Optics®		
BFL	5.82			
THIRD ANGLE PROJECTION 	TITLE	0.30 NA 7.50mm FL 350-700nm AR COATED, MOLDED ASPHERIC LENS		
ALL DIMS IN	mm	DWG NO	87129	SHEET 1 OF 1