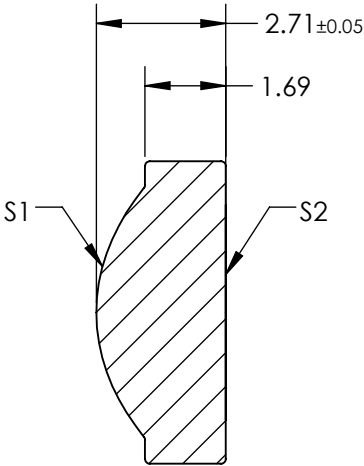
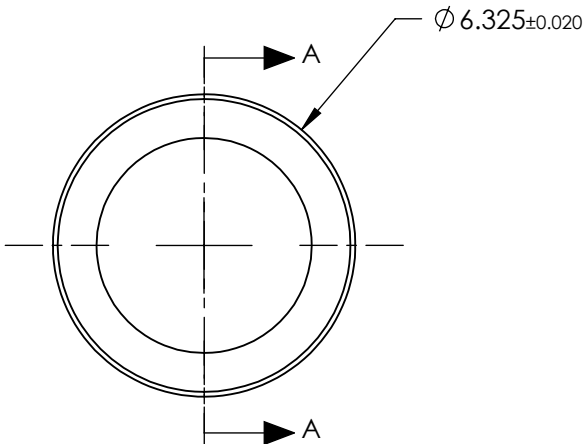


NOTES:

- 1. SUBSTRATE:
D-ZLAF52LA
- 2. NUMERICAL APERTURE: 0.55
- 3. COATING
S1 & S2: R(AVG) ≤ 0.5% @ 350 - 700nm
- 4. FOCAL LENGTH TOLERANCE: ±1%
- 5. TRANSMITTED WAVEFRONT ERROR (λ, RMS): < 0.087


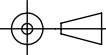


SECTION A-A

**FOR INFORMATION ONLY:
DO NOT MANUFACTURE
PARTS TO THIS DRAWING**

SPECIFICATIONS SUBJECT TO CHANGE WITHOUT NOTICE DIMENSIONS ARE FOR REFERENCE ONLY

| | S1 | S2 |
|-----------------|----------------------|----------------------|
| SHAPE | CONVEX | PLANO |
| SURFACE QUALITY | 40-20 | 40-20 |
| CLEAR APERTURE | Ø5.07 | Ø5.07 |
| BEVEL MAX | PROTECTIVE AS NEEDED | PROTECTIVE AS NEEDED |

| | | | | |
|------------------------|---|---|---|--------------|
| EFL | 4.51 |  Edmund Optics® | | |
| BFL | 3.08 | | | |
| THIRD ANGLE PROJECTION |  | TITLE | 0.55 NA 4.51mm FL 350-700nm AR COATED, MOLDED ASPHERIC LENS | |
| ALL DIMS IN | mm | DWG NO | 87153 | SHEET 1 OF 1 |