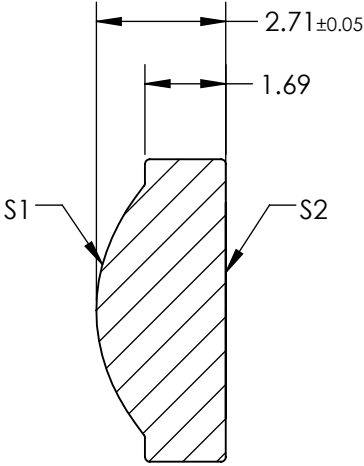
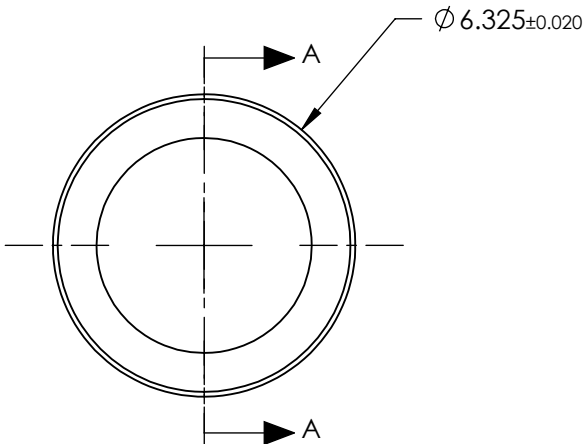


NOTES:

- 1. SUBSTRATE:
D-ZLAF52LA
- 2. NUMERICAL APERTURE: 0.55
- 3. COATING
S1 & S2: R(ABS) < 1.0% @ 600 - 1050nm
- 4. FOCAL LENGTH TOLERANCE: ±1%
- 5. TRANSMITTED WAVEFRONT ERROR (λ , RMS): < 0.087


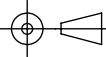


SECTION A-A

**FOR INFORMATION ONLY:
DO NOT MANUFACTURE
PARTS TO THIS DRAWING**

SPECIFICATIONS SUBJECT TO CHANGE WITHOUT NOTICE DIMENSIONS ARE FOR REFERENCE ONLY

	S1	S2
SHAPE	CONVEX	PLANO
SURFACE QUALITY	40-20	40-20
CLEAR APERTURE	Ø5.07	Ø5.07
BEVEL MAX	PROTECTIVE AS NEEDED	PROTECTIVE AS NEEDED

EFL	4.51	 Edmund Optics®		
BFL	3.08			
THIRD ANGLE PROJECTION		TITLE	0.55 NA 4.51mm FL 600-1050nm AR COATED, MOLDED ASPHERIC LENS	
ALL DIMS IN	mm	DWG NO	87154	SHEET 1 OF 1