

NOTES:

1. SUBSTRATE MATERIAL:  
N-BK7 / N-SF5
2. COATING (APPLY ACROSS CLEAR APERTURE)

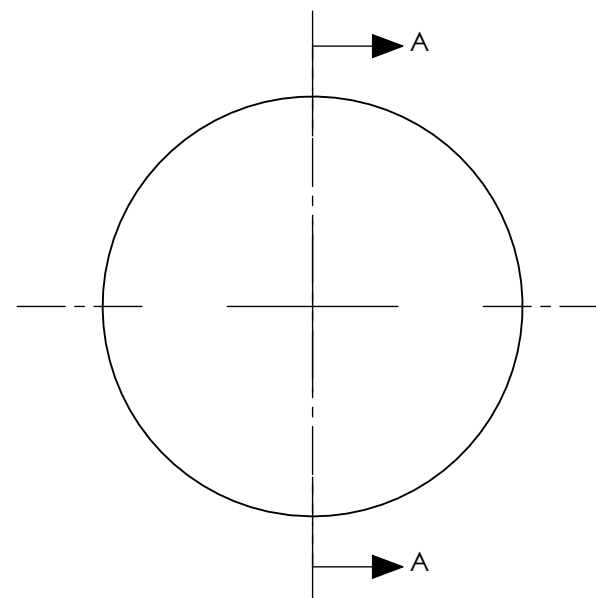
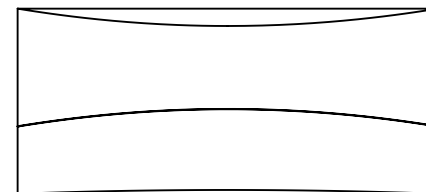
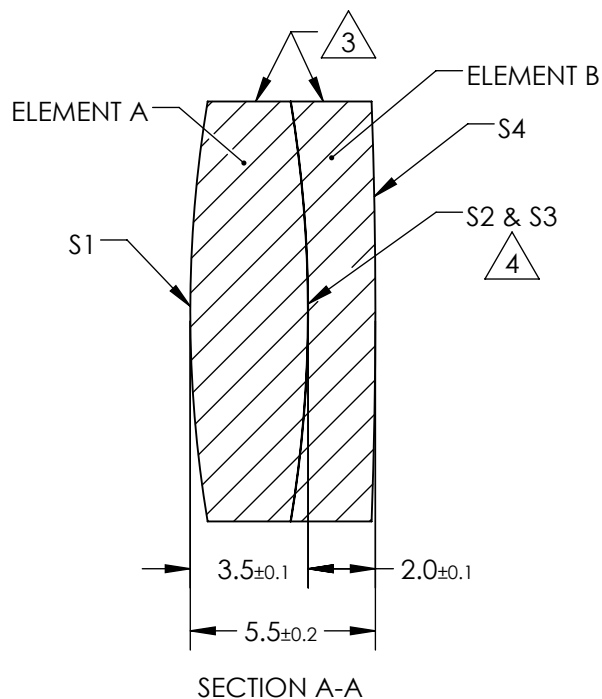
S1 & S4: MgF<sub>2</sub>  
R(avg) ≤ 1.75% @ 400 - 700nm

S2 & S3: NONE

### 3. FINE GROUND SURFACE


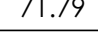
#### 4. ELEMENTS TO BE CEMENTED WITH NOA61

5. POWER, IRREGULARITY, AND SURFACE QUALITY SPECIFICATIONS APPLY ACROSS CLEAR APERTURE
6. RoHS COMPLIANT
7. FOCAL LENGTH TOLERANCE:  $\pm 3\%$
8. WEDGE TOLERANCE: 15 arcmin
9. CENTERING TOLERANCE AFTER CEMENTING:  
IMAGE RUNOUT: 0.1mm



**FOR INFORMATION ONLY:  
DO NOT MANUFACTURE  
PARTS TO THIS DRAWING**

SPECIFICATIONS SUBJECT TO CHANGE WITHOUT NOTICE  
DIMENSIONS ARE FOR REFERENCE ONLY

		ELEMENT A		ELEMENT B		SPECIFICATIONS SUBJECT TO CHANGE WITHOUT NOTICE DIMENSIONS ARE FOR REFERENCE ONLY					
REV. A		S1	S2	S3	S4	EFL	75	 Edmund Optics®			
SHAPE		CONVEX	CONVEX	CONCAVE	CONVEX	BFL	71.79				
RADIUS		38.1	38.1	38.1	172.49			TITLE		12.5mm DIA. X 75mm FL, ACHROMATIC CYLINDER LENS	
SURFACE QUALITY		40-20	40-20	40-20	40-20						
CLEAR APERTURE		Ø11.50	Ø11.50	Ø11.50	Ø11.50	THIRD ANGLE PROJECTION		TITLE		12.5mm DIA. X 75mm FL, ACHROMATIC CYLINDER LENS	
COATING APERTURE		Ø11.50	N/A	N/A	Ø11.50						
BEVEL		PROTECTED AS NEEDED				ALL DIMS IN	mm	DWG NO	68162		SHEET 1 OF 1