

NOTES:

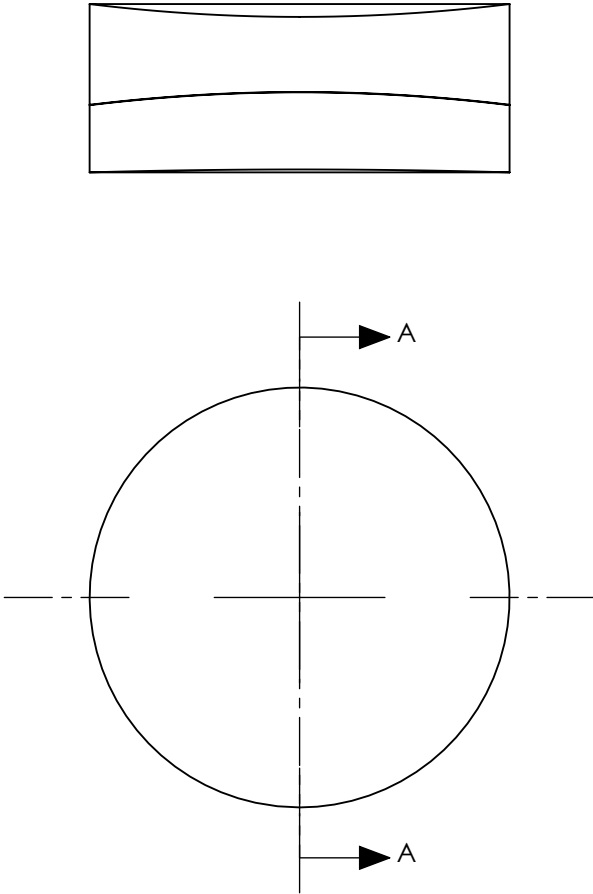
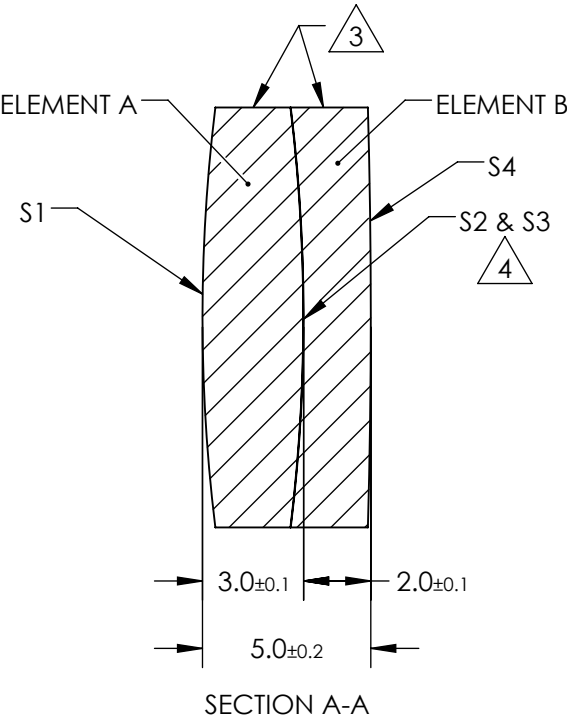
1. SUBSTRATE MATERIAL:
N-BK7 / N-SF5
2. COATING (APPLY ACROSS CLEAR APERTURE)
- S1 & S4: MgF2
R(avg) ≤1.75% @ 400 - 700nm
- S2 & S3: NONE

3. FINE GROUND SURFACE


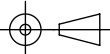
4. ELEMENTS TO BE CEMENTED WITH NOA61

5. POWER, IRREGULARITY, AND SURFACE QUALITY SPECIFICATIONS APPLY ACROSS CLEAR APERTURE
6. RoHS COMPLIANT
7. FOCAL LENGTH TOLERANCE: ±3%
8. WEDGE TOLERANCE: 15 arcmin
9. CENTERING TOLERANCE AFTER CEMENTING:
IMAGE RUNOUT: 0.1mm

**FOR INFORMATION ONLY:
DO NOT MANUFACTURE
PARTS TO THIS DRAWING**



SPECIFICATIONS SUBJECT TO CHANGE WITHOUT NOTICE
DIMENSIONS ARE FOR REFERENCE ONLY

					DIMENSIONS ARE FOR REFERENCE ONLY				
REV. A		ELEMENT A		ELEMENT B					
		S1	S2	S3	S4	EFL	100	 Edmund Optics®	
SHAPE		CONVEX	CONVEX	CONCAVE	CONVEX	BFL	97.15		
RADIUS		51.21	51.21	51.21	225.98			 TITLE 12.5mm DIA. X 100mm FL, ACHROMATIC CYLINDER LENS	
SURFACE QUALITY		40-20	40-20	40-20	40-20				
CLEAR APERTURE		Ø11.50	Ø11.50	Ø11.50	Ø11.50			ALL DIMS IN mm DWG NO 68163 SHEET 1 OF 1	
COATING APERTURE		Ø11.50	N/A	N/A	Ø11.50				
BEVEL		PROTECTED AS NEEDED							