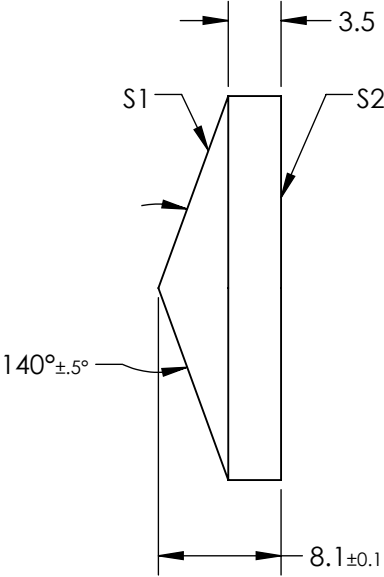
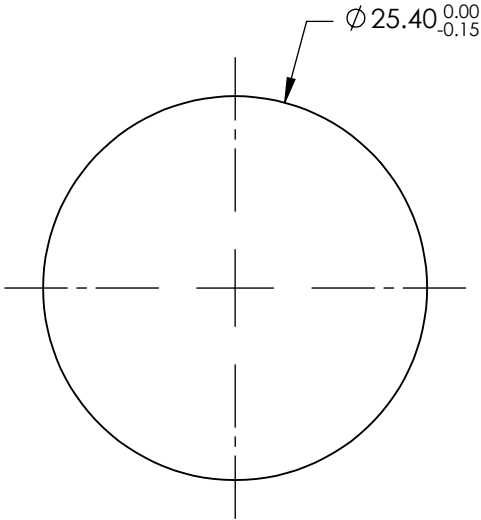


NOTES:

1. SUBSTRATE MATERIAL:
FUSED SILICA
2. COATING (APPLY ACROSS CLEAR APERTURE)

S1& S2: R(ABS) ≤1.0% @ 250 - 425nm
R(AVG) ≤0.75% @ 250 - 425nm
R(AVG) ≤0.5% @ 370 - 420nm
3. RoHS COMPLIANT



FOR INFORMATION ONLY:
DO NOT MANUFACTURE
PARTS TO THIS DRAWING

SPECIFICATIONS SUBJECT TO CHANGE WITHOUT NOTICE
DIMENSIONS ARE FOR REFERENCE ONLY

	S1	S2
SHAPE	CONICAL	PLANO
SURFACE ACCURACY	λ/4	λ/4
SURFACE QUALITY	40-20	40-20
CLEAR APERTURE	>90%	>90%
BEVEL	PROTECTIVE AS NEEDED	PROTECTIVE AS NEEDED

THIRD ANGLE PROJECTION

ALL DIMS IN

mm

Edmund Optics®

TITLE

140° APEX ANGLE, 25.4MM DIA, UV-AR COATED AXICON

DWG NO

83799

SHEET

1 OF 1