

NOTES:

1. SUBSTRATE MATERIAL:  
FUSED SILICA
2. COATING (APPLY ACROSS CLEAR APERTURE)

S1: Ultrafast Laser  
R(AVG) >99% @ 1520 - 1580nm

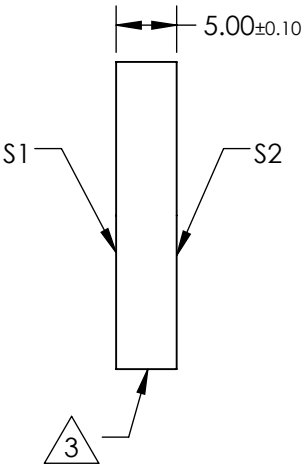
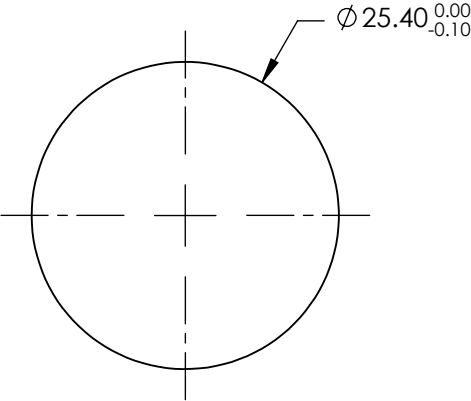
GDD SPECIFICATION: 0 ±30fs² @ 1520-1580nm

DAMAGE THRESHOLD:  
1000-on-1: >0.25 J/cm2, 100 fs, 100 Hz, @ 800 nm

S2: NONE

3. FINE GROUND SURFACE

4. RoHS COMPLIANT



SPECIFICATIONS SUBJECT TO CHANGE WITHOUT NOTICE  
DIMENSIONS ARE FOR REFERENCE ONLY

REV. A	S1	S2
SHAPE	PLANO	PLANO
CLEAR APERTURE (%)	Ø22.86	N/A
SURFACE QUALITY	20-10	COMMERCIAL POLISH
SURFACE FLATNESS	λ/8	N/A
BEVEL	PROTECTIVE AS NEEDED	PROTECTIVE AS NEEDED

THIRD ANGLE PROJECTION		Edmund Optics®		
TITLE		1520 - 1580nm, 25.4mm Dia. x 5.00mm Thickness, Ultrafast Laser Line Mirror		
ALL DIMS IN	mm	DWG NO	85101	SHEET 1 OF 1