

NOTES:

1. SUBSTRATE MATERIAL:
FUSED SILICA
2. COATING (APPLY ACROSS CLEAR APERTURE)

S1: Ultrafast Laser
R(AVG) >99.5% @ 1000 - 1060nm, AOI 45°

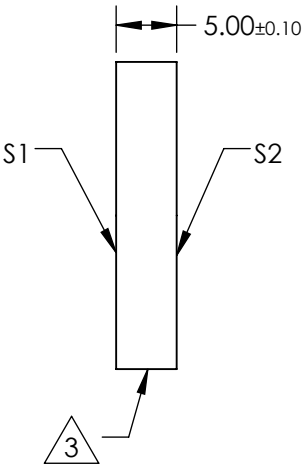
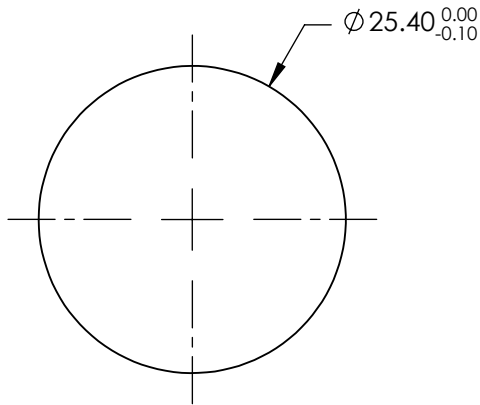
GDD SPECIFICATION: 0 ±30fs² @ 970-1110nm

DAMAGE THRESHOLD:
1000-on-1: >0.25 J/cm2, 100 fs, 100 Hz, @ 800 nm

S2: NONE

3.

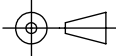
FINE GROUND SURFACE
4. RoHS COMPLIANT



SPECIFICATIONS SUBJECT TO CHANGE WITHOUT NOTICE
DIMENSIONS ARE FOR REFERENCE ONLY

REV. A	S1	S2
SHAPE	PLANO	PLANO
CLEAR APERTURE	Ø22.86	N/A
SURFACE QUALITY	20-10	COMMERCIAL POLISH
SURFACE FLATNESS	λ/8	N/A
BEVEL	PROTECTIVE AS NEEDED	PROTECTIVE AS NEEDED

THIRD ANGLE PROJECTION



Edmund Optics®

TITLE

1000 - 1060nm, 25.4mm Dia. x 5.00mm Thickness, Ultrafast Laser Line Mirror

DWG NO

85102

SHEET

1 OF 1