

NOTES:

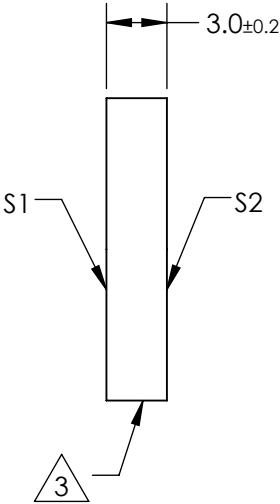
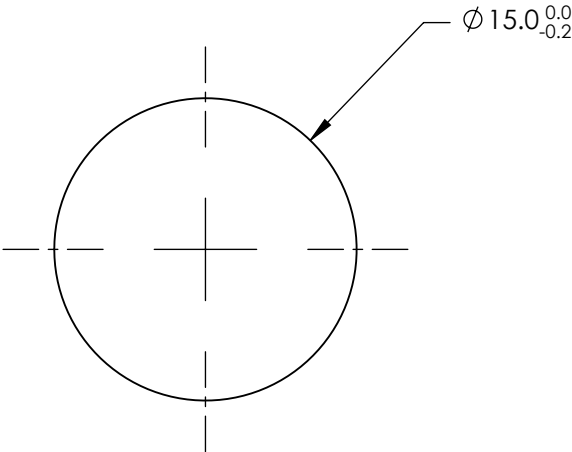
1. SUBSTRATE MATERIAL:  
FUSED SILICA
2. COATING (APPLY ACROSS CLEAR APERTURE)

S1: Broadband Dielectric  
R(avg) >98% @ 400 - 750nm (0 - 45°) ALL POLARIZATIONS  
R(avg) >99% @ 400 - 750nm (0°) ALL POLARIZATIONS  
S2: NONE

 FINE GROUND SURFACE

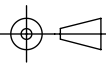

4. RoHS COMPLIANT

**FOR INFORMATION ONLY:  
DO NOT MANUFACTURE  
PARTS TO THIS DRAWING**



SPECIFICATIONS SUBJECT TO CHANGE WITHOUT NOTICE  
DIMENSIONS ARE FOR REFERENCE ONLY

REV. A	S1	S2
SHAPE	PLANO	PLANO
CLEAR APERTURE (%)	90	N/A
SURFACE QUALITY	20-10	COMMERCIAL POLISH
SURFACE FLATNESS	λ/10	N/A
BEVEL	PROTECTIVE AS NEEDED	PROTECTIVE AS NEEDED

THIRD ANGLE PROJECTION 			
TITLE		Ø15mm, 400 - 750nm BROADBAND λ/10 MIRROR	
ALL DIMS IN	mm	DWG NO	SHEET 1 OF 1
		87369	