
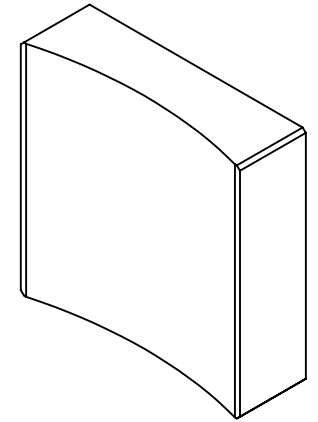
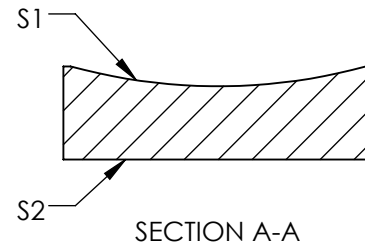
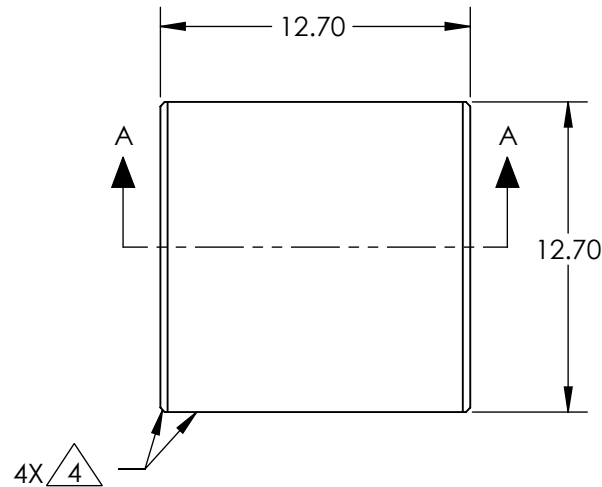



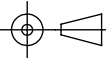
NOTES:

1. SUBSTRATE MATERIAL:  
FUSED SILICA
2. CENTERING TOLERANCE (AT 587.6nm):  
PLANO AXIS WEDGE: < 3 ARCMIN  
POWER ASIX WEDGE: < 4.5 ARCMIN  
AXIAL TWIST: < 3 ARCMIN
3. COATING (APPLY ACROSS CLEAR APERTURE)  
  
S1 & S2:  
 $R(AVG) \leq 1.5\%$  FROM 250-700nm @ 0° AOI  
 $R(ABS) \leq 1.0\%$  FROM 350-450nm @ 0° AOI
4.  FINE GROUND SURFACE
5. POWER, IRREGULARITY, AND SURFACE QUALITY  
SPECIFICAIONS APPLY ACROSS CLEAR APERTURE
6. ROHS COMPLIANT



**FOR INFORMATION ONLY:  
DO NOT MANUFACTURE  
PARTS TO THIS DRAWING**

SPECIFICATIONS SUBJECT TO CHANGE WITHOUT NOTICE  
DIMENSIONS ARE FOR REFERENCE ONLY

	S1	S2	 <b>Edmund Optics®</b>			
SHAPE	CONCAVE	PLANO		TITLE	LENS CYL SHAPING 12.7mm SQ x -50mm UV VIS	
SURFACE QUALITY	40 - 20	40 - 20		DWG NO	36112	SHEET 1 OF 1
CLEAR APERTURE	11.43 x 11.43	11.43 x 11.43				
BEVEL	PROTECTED AS NEEDED	PROTECTED AS NEEDED		ALL DIMS IN	mm	