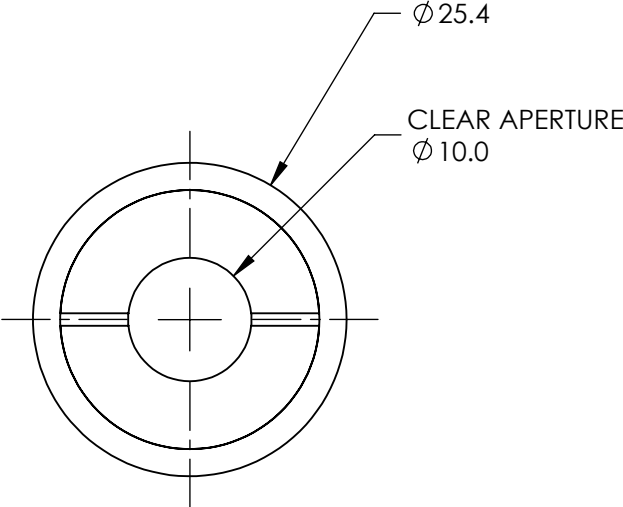
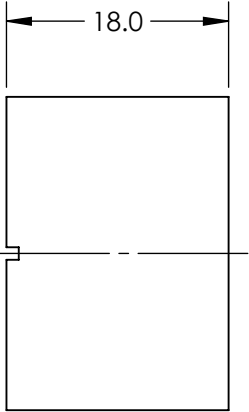
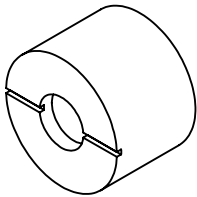


NOTES:

- 1. SUBSTRATE
A-BBO
- 2. EXTINCTION RATIO: >200,000:1
- 3. BEAM DEVIATION: <3 ARCMIN
- 4. DAMAGE THRESHOLD,
PULSED: 10J/cm² @ 1064nm, 20ns
- 5. RoHS NOT COMPLIANT

**FOR INFORMATION ONLY:
DO NOT MANUFACTURE
PARTS TO THIS DRAWING**



SPECIFICATIONS SUBJECT TO CHANGE WITHOUT NOTICE
DIMENSIONS ARE FOR REFERENCE ONLY



CLEAR APERTURE	Ø10
SURFACE QUALITY	20-10
WAVELENGTH RANGE	220 - 3500nm

THIRD ANGLE PROJECTION		TITLE	A-BBO WOLLASTON POLARIZER	
ALL DIMS IN	mm			
DWG NO		68823		SHEET 1 OF 1