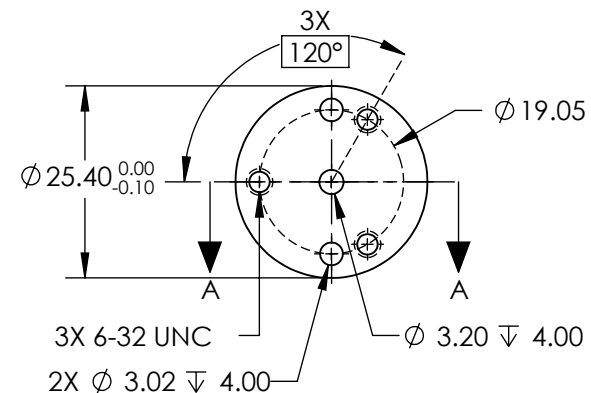
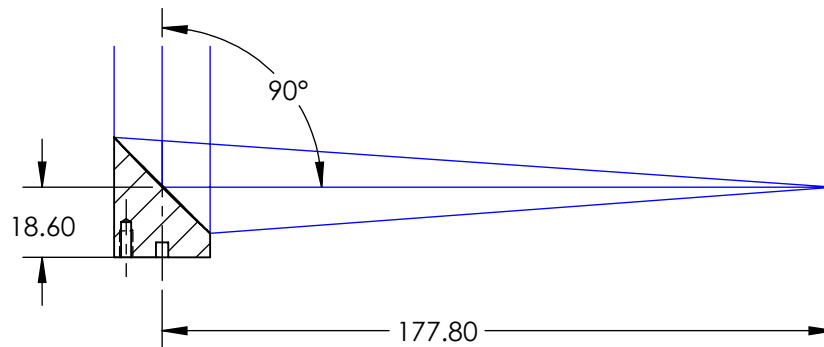
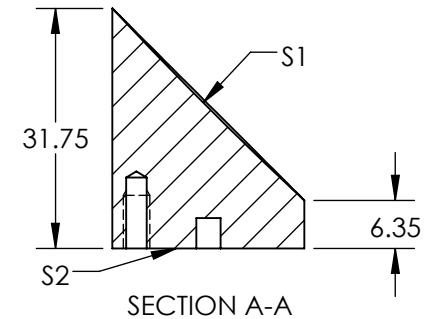
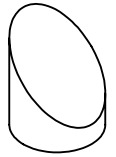


NOTES:

- SUBSTRATE MATERIAL:  
ALUMINUM
- FINISH (EXCEPT SURFACE S1 & S2):  
BLACK ANODIZED
- COATING (APPLY ACROSS CLEAR APERTURE)  
S1: PROTECTED GOLD  
R(AVG) >94% @ 0.7-0.8 $\mu$ m  
R(AVG) >97% @ 0.8-2.0 $\mu$ m  
R(AVG) >98% @ 2-12 $\mu$ m  
  
SURFACE ROUGHNESS: <50 Å RMS
- FOCAL LENGTH TOLERANCE:  $\pm 1\%$
- ROHS COMPLIANT

**FOR INFORMATION ONLY:  
DO NOT MANUFACTURE  
PARTS TO THIS DRAWING**



SPECIFICATIONS SUBJECT TO CHANGE WITHOUT NOTICE  
DIMENSIONS ARE FOR REFERENCE ONLY

REV. A	S1
SHAPE	PARABOLIC
SURFACE FIGURE AT 632.8nm (RMS)	$\lambda/8$
CLEAR APERTURE	90%
BEVEL	PROTECTIVE AS NEEDED



ALL DIMS IN

mm



**Edmund Optics®**

Ø25.4 X 177.8mm EFL, PROTECTED GOLD 50Å  
OFF-AXIS PARABOLIC MIRROR

DWG NO

37247

SHEET  
1 OF 1