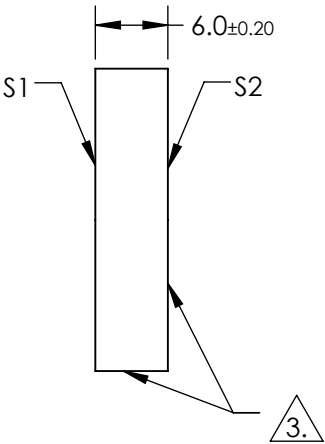
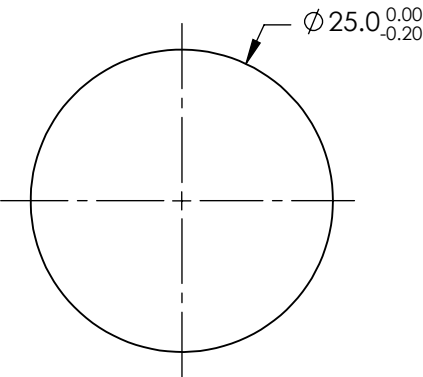
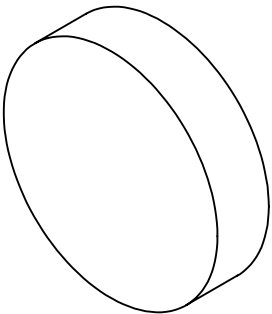


NOTES:

1. SUBSTRATE
FUSED SILICA
2. COATING (APPLY ACROSS COATING APERTURE)
S1: ENHANCED ALUMINUM
R(AVG) ≥78% @ 120 - 125nm
R(AVG) ≥85% @ 120 - 600nm
S2: NONE

3. FINE GROUND SURFACE

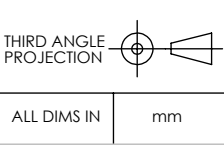
4. SURFACE S2 TO BE PARALLEL WITH SURFACE S1 TO WITHIN <3 ARCMIN
5. ROHS COMPLIANT



**FOR INFORMATION ONLY:
DO NOT MANUFACTURE
PARTS TO THIS DRAWING**

SPECIFICATIONS SUBJECT TO CHANGE WITHOUT NOTICE
DIMENSIONS ARE FOR REFERENCE ONLY

REV. A.	S1	S2
SHAPE	PLANO	PLANO
CLEAR APERTURE	>90%	N/A
SURFACE QUALITY	10-5	FINE GROUND
SURFACE FLATNESS	1/10 WAVE	N/A
BEVEL	PROTECTIVE AS NEEDED	PROTECTIVE AS NEEDED



Edmund Optics®

TITLE	25mm Dia., Vacuum UV (VUV) Mirror
DWG NO	33913
SHEET	1 OF 1