

NOTES:

1. SUBSTRATE MATERIAL:  
FUSED SILICA
2. COATING (APPLY ACROSS CLEAR APERTURE)

S1 & S2: UV-AR

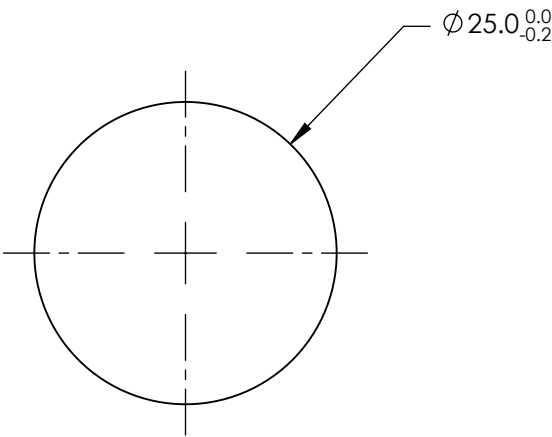
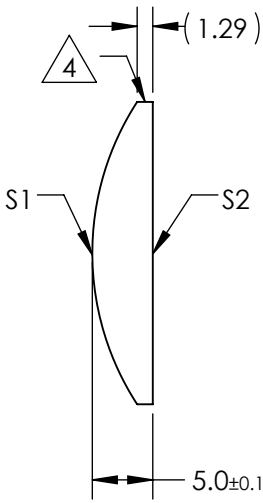
R(abs) ≤1.0% @ 250 - 425nm  
R(avg) ≤0.75% @ 250 - 425 nm  
R(avg) ≤0.5% @ 370 - 420nm

3. WEDGE TOLERANCE: <15 arcmin


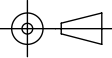
4. FINE GROUND SURFACE

5. POWER, IRREGULARITY, AND SURFACE QUALITY  
SPECIFICAIONS APPLY ACROSS CLEAR APERTURE
6. RoHS COMPLIANT

**FOR INFORMATION ONLY:  
DO NOT MANUFACTURE  
PARTS TO THIS DRAWING**



SPECIFICATIONS SUBJECT TO CHANGE WITHOUT NOTICE  
DIMENSIONS ARE FOR REFERENCE ONLY

REV. A	S1	S2	EFL	50	 <b>Edmund Optics®</b>		
SHAPE	CONVEX	PLANO	BFL	46.58			
RADIUS	22.93	∞			TITLE	25mm DIAMETER X 50mm FL UV-AR COATED, UV PCX CYLINDER LENS	
SURFACE QUALITY	40-20	40-20					
CLEAR APERTURE	Ø24.00	Ø24.00	ALL DIMS IN		DWG NO	68180	
COATING APERTURE	Ø24.00	Ø24.00					
BEVEL	PROTECTED AS NEEDED	PROTECTED AS NEEDED					SHEET 1 OF 1