

NOTES:

1. SUBSTRATE MATERIAL:  
FUSED SILICA
2. COATING (APPLY ACROSS CLEAR APERTURE)

S1 & S2: UV-VIS

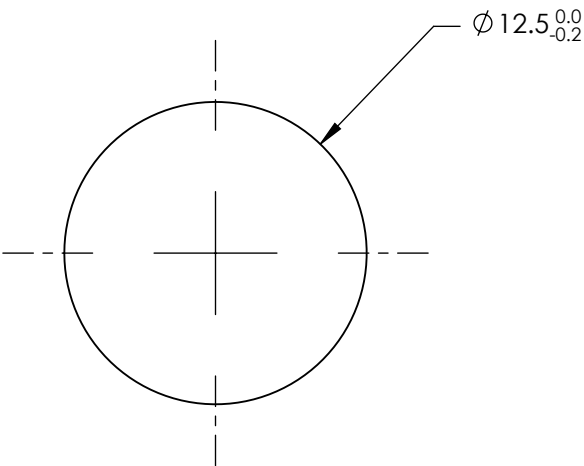
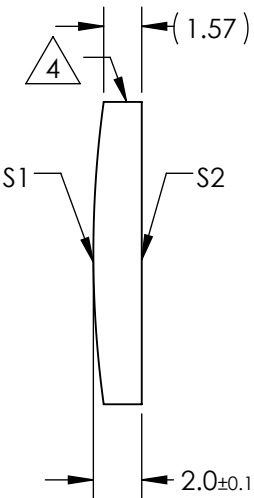
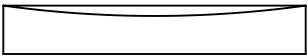
R(abs) ≤1.0% @ 350 - 450nm  
R(avg) ≤1.5% @ 250 - 700nm

3. WEDGE TOLERANCE: <15 arcmin

4. FINE GROUND SURFACE


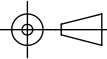
5. POWER, IRREGULARITY, AND SURFACE QUALITY  
SPECIFICAIONS APPLY ACROSS CLEAR APERTURE

6. RoHS COMPLIANT



**FOR INFORMATION ONLY:  
DO NOT MANUFACTURE  
PARTS TO THIS DRAWING**

SPECIFICATIONS SUBJECT TO CHANGE WITHOUT NOTICE  
DIMENSIONS ARE FOR REFERENCE ONLY

REV. A	S1	S2	EFL	100	 <b>Edmund Optics®</b>		
SHAPE	CONVEX	PLANO	BFL	98.63			
RADIUS	45.85	∞			TITLE	12.5mm DIAMETER X 100mm FL UV-VIS COATED, UV PCX CYLINDER LENS	
SURFACE QUALITY	40-20	40-20					
CLEAR APERTURE	Ø11.50	Ø11.50	ALL DIMS IN		DWG NO	86045	
COATING APERTURE	Ø11.50	Ø11.50					
BEVEL	PROTECTED AS NEEDED	PROTECTED AS NEEDED	mm				SHEET 1 OF 1