

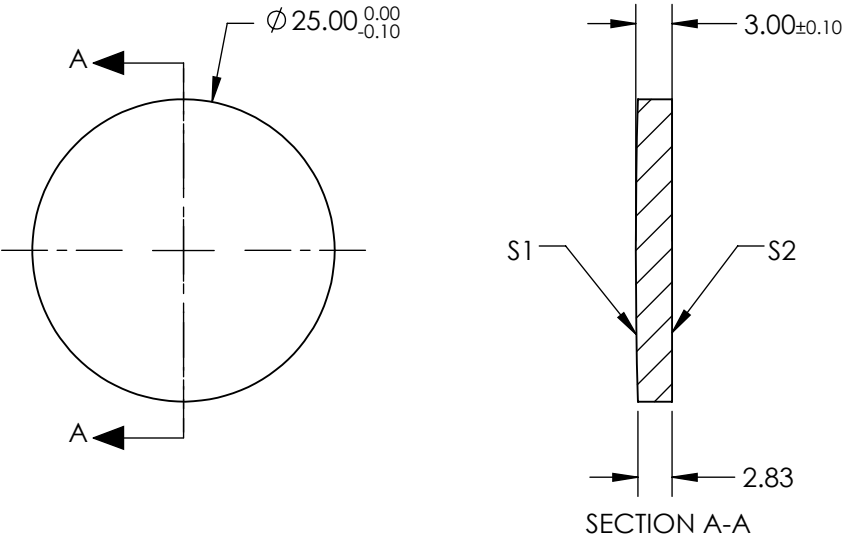
NOTES:

- 1. SUBSTRATE: GERMANIUM (GE)
- 2. COATING (APPLY ACROSS COATING APERTURE)


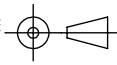
S1: R(avg) <5.0% @ 3 - 12µm

S2: R(avg) <5.0% @ 3 - 12µm

- 3. EDGES DIAMOND TURNED
- 4. CENTERING: <3 ARCMIN
- 5. RoHS COMPLIANT



**FOR INFORMATION ONLY:  
DO NOT MANUFACTURE  
PARTS TO THIS DRAWING**

	S1	S2	SPECIFICATIONS SUBJECT TO CHANGE WITHOUT NOTICE DIMENSIONS ARE FOR REFERENCE ONLY			
SHAPE	CONVEX	PLANO	EFL @ 10.6µm	150	 <b>Edmund Optics®</b>	
RADIUS	450.58	∞	BFL @ 10.6µm	149.25		
SURFACE QUALITY	60-40	60-40	THIRD ANGLE PROJECTION 	TITLE	25mm DIA. X 150mm FL, 3 - 12µm COATED, GE PLANO-CONVEX LEN	
CLEAR APERTURE	Ø24	Ø24				
BEVEL	PROTECTIVE AS NEEDED	PROTECTIVE AS NEEDED	ALL DIMS IN	mm	DWG NO	87950
					SHEET 1 OF 1	