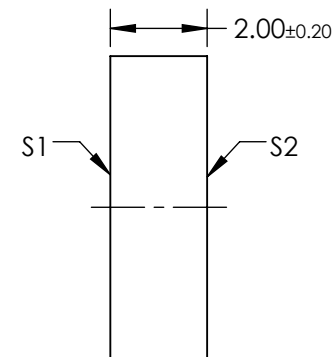
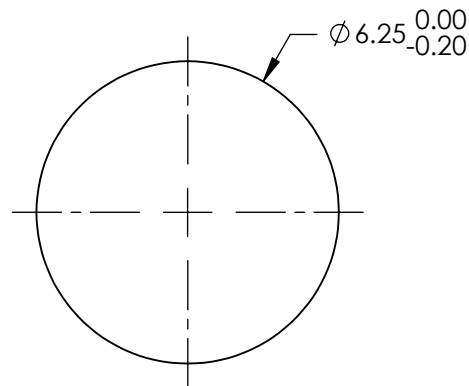
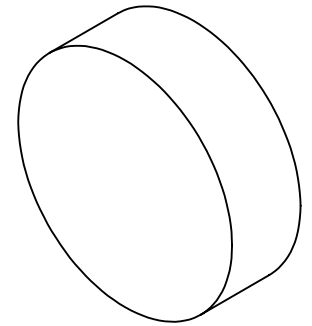


NOTES:

1. SUBSTRATE: B270
2. RoHS: COMPLIANT
3. SURFACE S2 TO BE PARALLEL TO SURFACE S1 TO WITHIN < 4 arcmin
4. S1 & S2:
AR: Ravg <0.5% @ 400 - 700nm



FOR INFORMATION ONLY:
DO NOT MANUFACTURE
PARTS TO THIS DRAWING

SPECIFICATIONS SUBJECT TO CHANGE WITHOUT NOTICE
DIMENSIONS ARE FOR REFERENCE ONLY

REV. A	
EXTINCTION RATIO	10000
OPERATING TEMPERATURE (°C)	-25 to +65
SURFACE FLATNESS	<1λ
TRANSMISSION	25% @ ±2% (for random polarization)

THIRD ANGLE PROJECTION	
ALL DIMS IN	mm

TITLE	6.25mm DIA. HIGH PERFORMANCE LINEAR GLASS POLARIZER		
DWG NO	66180	SHEET 1 OF 1	