

NOTES:

1. SUBSTRATE: BOROFLOAT®

2. PARABOLIC SURFACE:
 $Z=Y^2/[4 * EFL]$

3. COATING (APPLY ACROSS COATING APERTURE)
ENHANCED ALUMINUM (450-650nm)

S1: Ravg >95% @ 450 - 650nm

S2: NONE

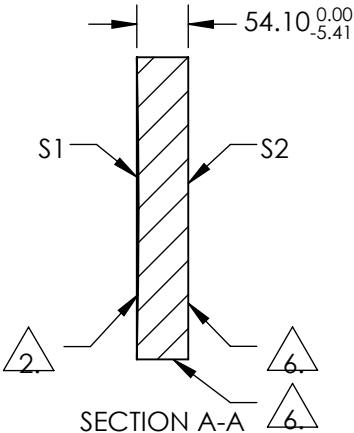
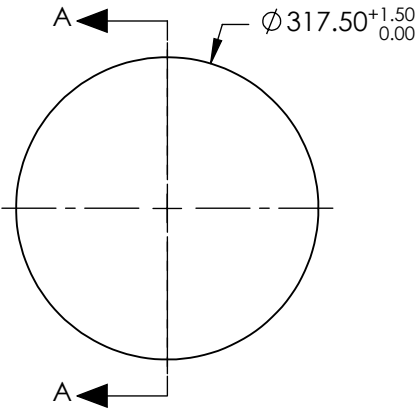
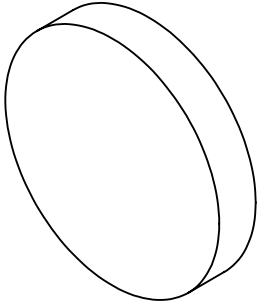
4. EDGES: MOLDED EDGE ACCEPTABLE

5. POWER, IREGULARITY, SURFACE QUALITY AND COATING
SPECIFICATIONS APPLY ACROSS CLEAR APERTURE

6. FINE GRIND SURFACE

7. RoHS: COMPLIANT

**FOR INFORMATION ONLY:
DO NOT MANUFACTURE
PARTS TO THIS DRAWING**



	S1	S2
SHAPE	CONCAVE	PLANO
CLEAR APERTURE	Ø286.0	N/A
EFFECTIVE FOCAL LENGTH	3175	N/A
FOCAL LENGTH TOLERANCE	±1.5%	N/A
SURFACE QUALITY	60-40	FINE GRIND
SURFACE FLATNESS	λ/8	N/A
BEVEL	PROTECTIVE AS NEEDED	PROTECTIVE AS NEEDED

SPECIFICATIONS SUBJECT TO CHANGE WITHOUT NOTICE
DIMENSIONS ARE FOR REFERENCE ONLY

EO® Edmund Optics®

THIRD ANGLE PROJECTION		TITLE	12.5 IN F10 1/8W PARAB ENH AL		
		DWG NO	35730533	SHEET 1 OF 1	