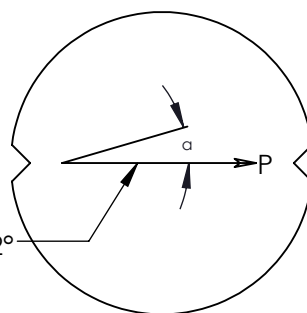
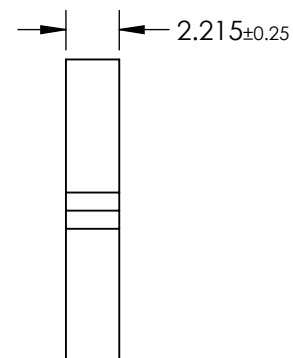
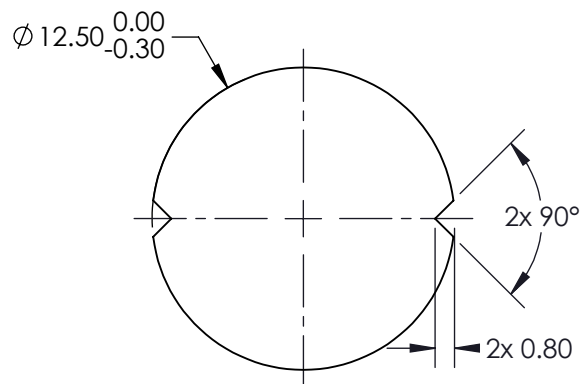
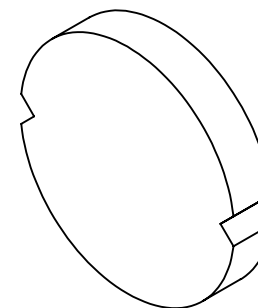


NOTES:

1. SUBSTRATE: PMMA
2. WAVELENGTH RANGE (nm): 400 - 700
3. EXTINCTION RATIO: 9000:1
4. OPERATING TEMPERATURE (°C): -40 to +80
5. TRANSMISSION (%):  
 Single: 42  
 Parallel: 36  
 Crossed: < 0.004
6. RoHS: COMPLIANT

**FOR INFORMATION ONLY:  
DO NOT MANUFACTURE  
PARTS TO THIS DRAWING**



POLARIZATION AXIS P  $\alpha = 0^\circ \pm 2^\circ$

SPECIFICATIONS SUBJECT TO CHANGE WITHOUT NOTICE  
DIMENSIONS ARE FOR REFERENCE ONLY

THE POLARIZERS CONSISTS OF A POLYMER POLARIZATION  
FILM LAMINATED ONTO PMMA.

**EO<sup>®</sup> Edmund Optics<sup>®</sup>**

THIRD ANGLE PROJECTION 	TITLE		12.5mm Diameter Linear Plastic Polarizer, Unmounted	
	ALL DIMS IN	mm	DWG NO	85917
				SHEET 1 OF 1