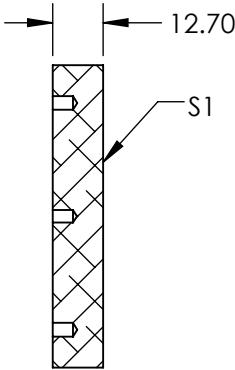
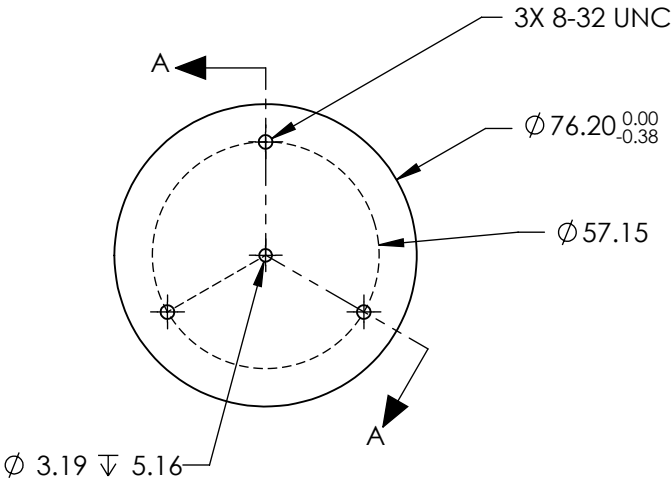
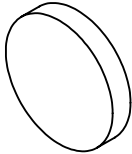


- NOTES:
- 1. SUBSTRATE MATERIAL:  
ALUMINUM
  - 2. FINISH (EXCEPT SURFACE S1):  
BLACK ANODIZED
  - 3. COATING (APPLY ACROSS CLEAR APERTURE)  
  
S1: PROTECTED ALUMINUM  
R(AVG) >85% @ 400 - 700nm  
R(AVG) >70% @ 700 - 2000nm  
R(AVG) >97% @ 2 - 12µm
  - SURFACE ROUGHNESS: <175Å
  - 4. ROHS COMPLIANT

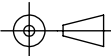
**FOR INFORMATION ONLY:  
DO NOT MANUFACTURE  
PARTS TO THIS DRAWING**



SECTION A-A

SPECIFICATIONS SUBJECT TO CHANGE WITHOUT NOTICE  
DIMENSIONS ARE FOR REFERENCE ONLY

**EO<sup>®</sup> Edmund Optics<sup>®</sup>**

	S1	<div>THIRD ANGLE PROJECTION</div> <div></div>		TITLE	Ø76.2mm, ALUM. COATED, ALUM. SUBSTRATE MIRROR	
SHAPE	PLANO					
SURFACE ACCURACY AT 632.8nm	λ/2 RMS	ALL DIMS IN	mm	DWG NO	47119	
SURFACE QUALITY	80-50					
						SHEET 1 OF 1