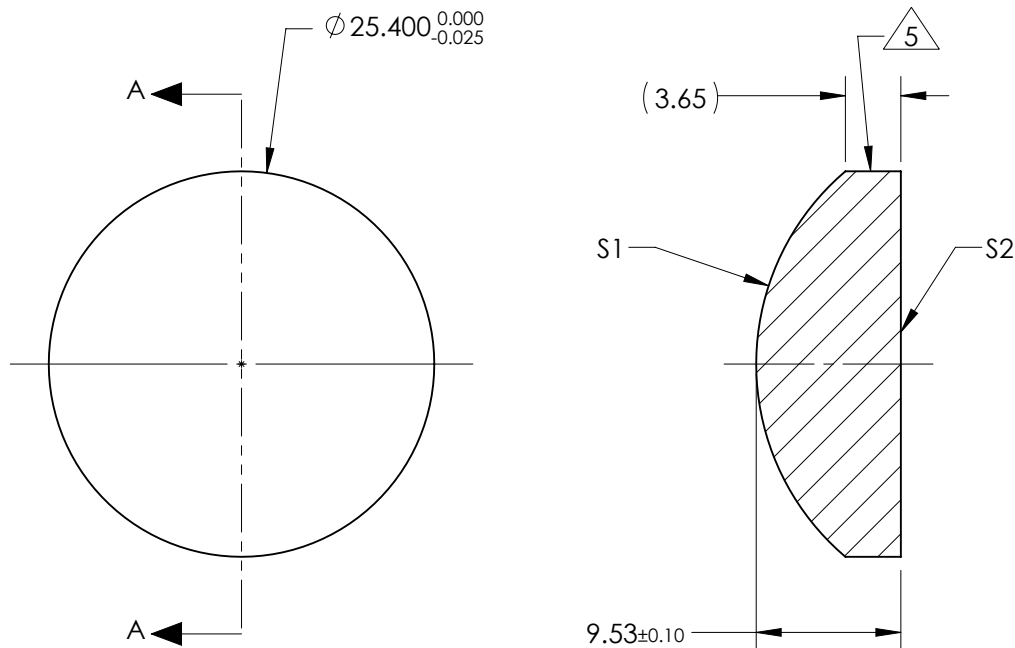


NOTES:

1. SUBSTRATE:
CORNING: FUSED SILICA 458/678
2. ROHS COMPLIANT
3. CENTERING TOLERANCE (AT 587.6nm):
BEAM DEVIATION (HALF ANGLE): <1 ARCMIN
4. COATING (APPLY ACROSS COATING APERTURE)
S1 & S2: 532nm Laser AR Coating
R(ABS) < 0.25% @ 532nm @ 0° AOI

DAMAGE THRESHOLD
PULSED: 10J/cm² @ 20ns, 20Hz @ 532nm
5. FINE GRIND SURFACE
6. POWER, IRREGULARITY, AND SURFACE QUALITY
SPECIFICATIONS APPLY ACROSS CLEAR APERTURE
7. FOCAL LENGTH (EFL): 35.00mm ±1%
BACK FOCAL LENGTH (BFL): 28.55mm
8. PROTECTIVE BEVEL AS NEEDED
9. DESIGN WAVELENGTH: 355nm



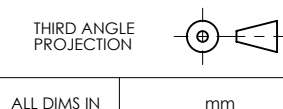
SECTION A-A

FOR INFORMATION ONLY:
DO NOT MANUFACTURE
PARTS TO THIS DRAWING

| | S1 | S2 |
|-------------------------|-----------|-----------|
| SHAPE | CONVEX | PLANO |
| RADIUS | 16.66 | INFINITY |
| SURFACE QUALITY | 10 - 5 | 10 - 5 |
| MIN CLEAR APERTURE | Ø 21.59 | Ø 21.59 |
| MIN COATING APERTURE | Ø 21.59 | Ø 21.59 |
| POWER AT 632.8nm | 2.0 RINGS | 2.0 RINGS |
| IRREGULARITY AT 632.8nm | 0.2 RINGS | 0.2 RINGS |

SPECIFICATIONS SUBJECT TO CHANGE WITHOUT NOTICE
DIMENSIONS ARE FOR REFERENCE ONLY

EO® **Edmund Optics**®



ALL DIMS IN

mm

| | | | |
|--------|--|-----------------|--|
| TITLE | 25.4mm Dia x 35mm EFL, 532nm Coated, Laser Grade PCX Lens | | |
| DWG NO | 38694 | SHEET 1 OF 1 | |