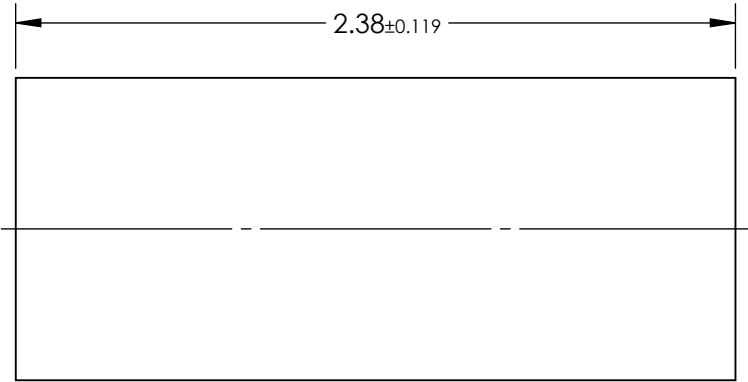
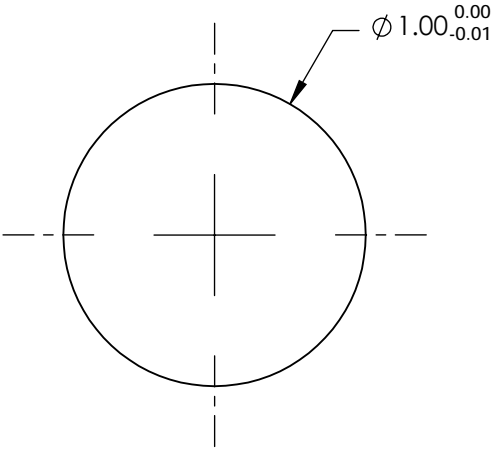


NOTES:

- 1. SUBSTRATE:
Alumoscilate Glass Embedded with Silver Ions
- 2. COATING (APPLY ACROSS COATING APERTURE)
S1 & S2: Uncoated
- 3. EFL: 0.93
- 4. f/# : 0.93
- 5. NUMERICAL APERTURE: 0.54
- 6. DESIGN WAVELENGTH: 810nm
- 7. WORKING DISTANCE: 0mm
- 8. ROHS: COMPLIANT



**FOR INFORMATION ONLY:
DO NOT MANUFACTURE
PARTS TO THIS DRAWING**

SPECIFICATIONS SUBJECT TO CHANGE WITHOUT NOTICE
DIMENSIONS ARE FOR REFERENCE ONLY

EO® **Edmund Optics®**

	S1	S2				
SHAPE	PLANO	PLANO	THIRD ANGLE PROJECTION		TITLE	1.0mm Dia, 810nm DWL, 0.0mm WD, Uncoated, GRIN Lens
SURFACE QUALITY	40-20	40-20			DWG NO	64523
CLEAR APERTURE	Ø0.9	Ø0.9				SHEET 1 OF 1
			ALL DIMS IN	mm		