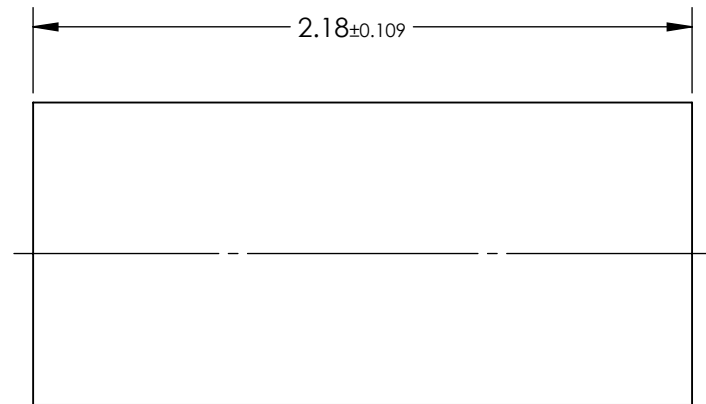
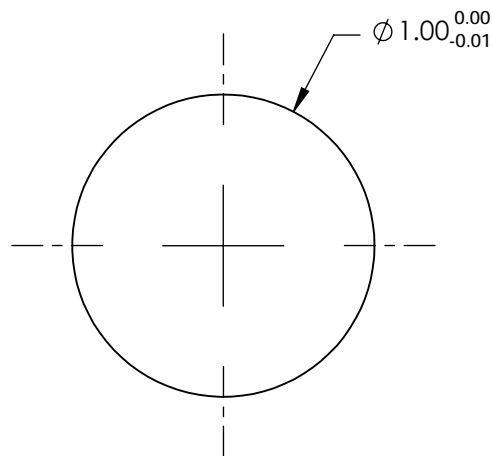



1. SUBSTRATE:
Alumosilcate Glass Embedded with Silver Ions
2. COATING (APPLY ACROSS COATING APERTURE)
S1 & S2: Uncoated
3. EFL: 0.94
4. $f/\#$: 0.94
5. NUMERICAL APERTURE: 0.54
6. DESIGN WAVELENGTH: 810nm
7. WORKING DISTANCE: 0.12mm
8. ROHS: COMPLIANT



**FOR INFORMATION ONLY:
DO NOT MANUFACTURE
PARTS TO THIS DRAWING**

SPECIFICATIONS SUBJECT TO CHANGE WITHOUT NOTICE
DIMENSIONS ARE FOR REFERENCE ONLY



	S1	S2	THIRD ANGLE PROJECTION 		TITLE 1.0mm Dia, 810nm DWL, 0.12mm WD, Uncoated, GRIN Lens		
SHAPE	PLANO	PLANO					
SURFACE QUALITY	40-20	40-20					
CLEAR APERTURE	Ø0.9	Ø0.9	ALL DIMS IN	mm	DWG NO	64524	SHEET 1 OF 1