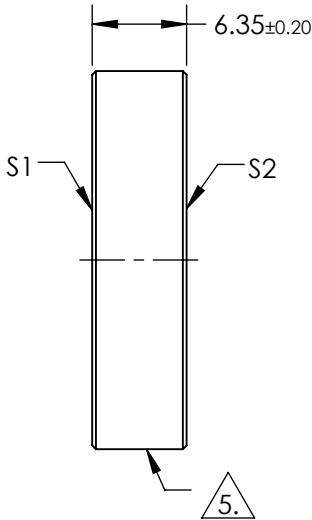
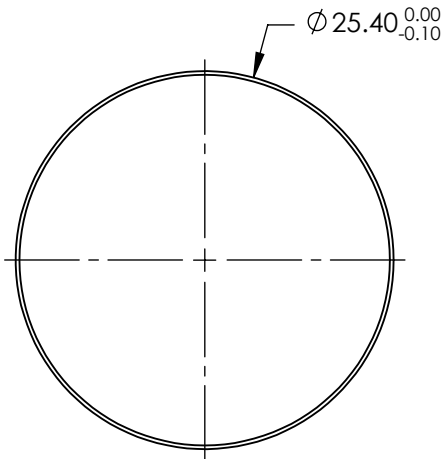


- NOTES:
- SUBSTRATE:  
FUSED SILICA
  - SURFACE S2 TO BE PARALLEL TO SURFACE S1 TO WITHIN <3 ARCMIN
  - COATING (APPLY ACROSS COATING APERTURE):  
  
S1:  
Rs > 99.9% @ 1900 - 2200nm @ 45° AOI  
Rp > 99.6% @ 1940 - 2100nm @ 45° AOI  
  
DAMAGE THRESHOLD, PULSED:  
>10J/cm² @ 10ns, 10Hz, 2000nm  
  
S2: COMPENSTATING COATING


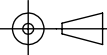
**FOR INFORMATION ONLY:  
DO NOT MANUFACTURE  
PARTS TO THIS DRAWING**

4. FINE GRIND SURFACE
5. RoHS: COMPLIANT



SPECIFICATIONS SUBJECT TO CHANGE WITHOUT NOTICE  
DIMENSIONS ARE FOR REFERENCE ONLY

	S1	S2
SHAPE	PLANO	PLANO
CLEAR APERTURE	Ø24.40	N/A
SURFACE QUALITY	40-20	N/A
SURFACE FLATNESS	λ/7	N/A
BEVEL	PROTECTIVE AS NEEDED	PROTECTIVE AS NEEDED

THIRD ANGLE PROJECTION		 <b>Edmund Optics®</b>	
		TITLE	25.4mm 2µm MIRROR 45 DEG
ALL DIMS IN	mm	DWG NO	37502
			SHEET 1 OF 1