

NOTES:

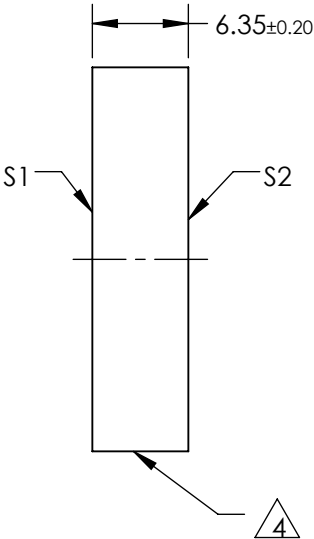
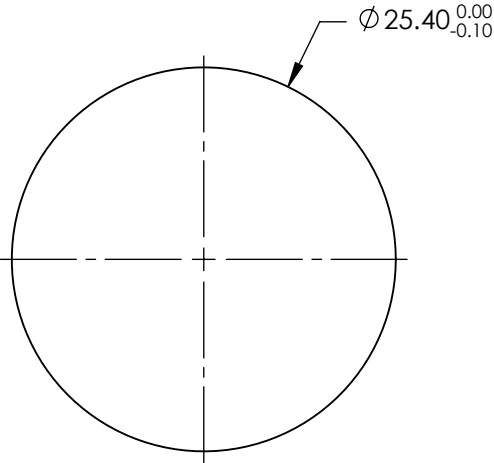
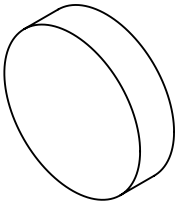
- 1. SUBSTRATE: N-BK7
- 2. SURFACE S2 TO BE PARALLEL TO SURFACE S1 TO WITHIN <3 ARCMIN
- 3. COATING (APPLY ACROSS COATING APERTURE)

S1: R(ABS) >99% @ 980nm @ 45° AOI

S2: NONE

 FINE GRIND SURFACE

- 5. ROHS: COMPLIANT



FOR INFORMATION ONLY:
DO NOT MANUFACTURE
PARTS TO THIS DRAWING

SPECIFICATIONS SUBJECT TO CHANGE WITHOUT NOTICE
DIMENSIONS ARE FOR REFERENCE ONLY

	S1	S2
SHAPE	PLANO	PLANO
SURFACE QUALITY	20-10	COMMERCIAL POLISH
SURFACE FLATNESS	$\lambda/10$	N/A
MIN CLEAR APERTURE	$\varnothing 22.86$	N/A
BEVEL	PROTECTIVE AS NEEDED	PROTECTIVE AS NEEDED



ALL DIMS IN mm

 **Edmund Optics®**

TITLE	25.4mm DIA. 980nm 45°, LOW COST LASER LINE MIRROR		
DWG NO	11013	SHEET 1 OF 1	