


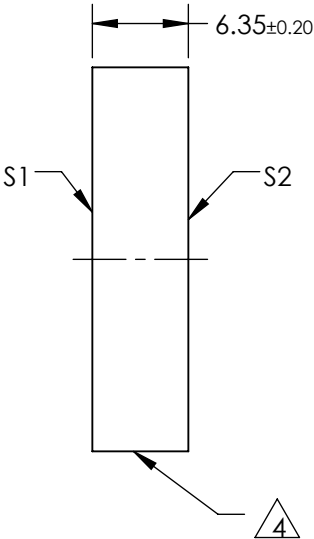
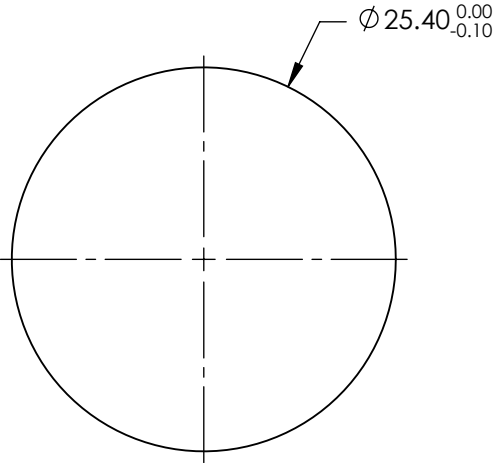
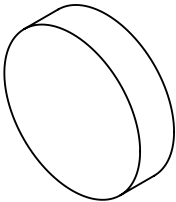
NOTES:

- 1. SUBSTRATE: N-BK7
- 2. SURFACE S2 TO BE PARALLEL TO SURFACE S1 TO WITHIN <3 ARCMIN
- 3. COATING (APPLY ACROSS COATING APERTURE)

S1: R(ABS) >99% @ 488nm @ 45° AOI

S2: NONE

-  FINE GRIND SURFACE
- 5. ROHS: COMPLIANT



**FOR INFORMATION ONLY:**  
**DO NOT MANUFACTURE**  
**PARTS TO THIS DRAWING**

SPECIFICATIONS SUBJECT TO CHANGE WITHOUT NOTICE  
DIMENSIONS ARE FOR REFERENCE ONLY

	S1	S2
SHAPE	PLANO	PLANO
SURFACE QUALITY	20-10	COMMERCIAL POLISH
SURFACE FLATNESS	$\lambda/10$	N/A
MIN CLEAR APERTURE	$\varnothing 22.86$	N/A
BEVEL	PROTECTIVE AS NEEDED	PROTECTIVE AS NEEDED



ALL DIMS IN mm

 **Edmund Optics®**

TITLE 25.4mm DIA. 488nm 45°, LOW COST LASER LINE MIRROR

DWG NO 39989

SHEET 1 OF 1