

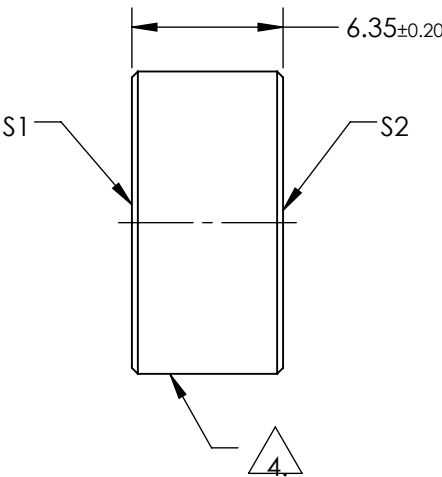
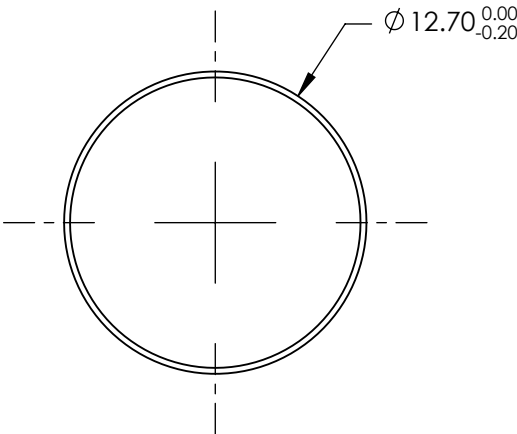
NOTES:

- 1. SUBSTRATE:
FUSED SILICA
- 2. S2 TO BE PARALLEL TO S1 TO WITHIN <3ARCMIN
- 3. COATING (APPLY ACROSS COATING APERTURE)
S1: GOLD
R(AVG) >96% from 700-2000nm
R(AVG) >96% from 2000-10000nm

S2: NONE

4. FINE GROUND SURFACE

- 5. CLEAR APERTURE AND COATING APERTURE ARE CENTERED ON SURFACE
- 6. SURFACE QUALITY SPECIFICATIONS APPLY ACROSS CLEAR APERTURE
- 7. ROHS: COMPLIANT



**FOR INFORMATION ONLY:
DO NOT MANUFACTURE
PARTS TO THIS DRAWING**

SPECIFICATIONS SUBJECT TO CHANGE WITHOUT NOTICE
DIMENSIONS ARE FOR REFERENCE ONLY

	S1	S2
SHAPE	PLANO	PLANO
SURFACE QUALITY	20-10	COMMERCIAL POLISH
SURFACE FLATNESS	0.10 WAVE	N/A
CLEAR APERTURE	Ø11.43	N/A
COATING APERTURE	Ø11.70	N/A
BEVEL	PROTECTIVE AS NEEDED	PROTECTIVE AS NEEDED



ALL DIMS IN

mm



Edmund Optics®

TITLE

MIRROR FS 1/10 WAVE GOLD 12.7 DIA

DWG NO

39193

SHEET
1 OF 1