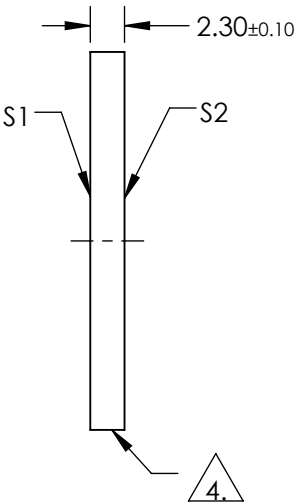
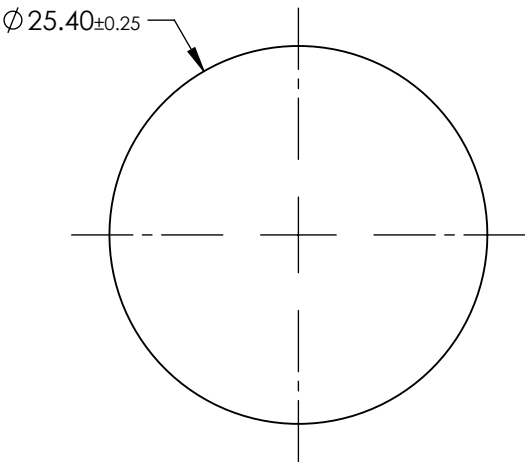


NOTES:

- 1. SUBSTRATE: OPTICAL GRADE SAPPHIRE (Al₂O₃)
- 2. SURFACE S2 TO BE PARALLEL TO SURFACE S1 TO WITHIN <3.5 ARCMIN
- 3. COATING (APPLY ACROSS COATING APERTURE):
S1 & S2: R(AVG) ≤ 0.5% from 600 - 1050nm

4. GRIND SURFACE

5. RoHS: COMPLIANT



**FOR INFORMATION ONLY:
DO NOT MANUFACTURE
PARTS TO THIS DRAWING**

| | S1 | S2 |
|----------------------------|----------------------|----------------------|
| SHAPE | PLANO | PLANO |
| SURFACE QUALITY | 80-50 | 80-50 |
| SURFACE FLATNESS @ 632.8nm | 2λ | 2λ |
| SURFACE ROUGHNESS (μm/in) | 0.1 | 0.1 |
| BIREFRINGENCE | 0.008 | 0.008 |
| CLEAR APERTURE | Ø22.86 | Ø22.86 |
| BEVEL | PROTECTIVE AS NEEDED | PROTECTIVE AS NEEDED |

SPECIFICATIONS SUBJECT TO CHANGE WITHOUT NOTICE
DIMENSIONS ARE FOR REFERENCE ONLY

EO® Edmund Optics®

| | | | | |
|------------------------|----|--------|--------------------------------|--------------|
| THIRD ANGLE PROJECTION | | TITLE | Window Saph 25.4 Dia NIR I Ctd | |
| ALL DIMS IN | mm | DWG NO | 39254 | SHEET 1 OF 1 |