

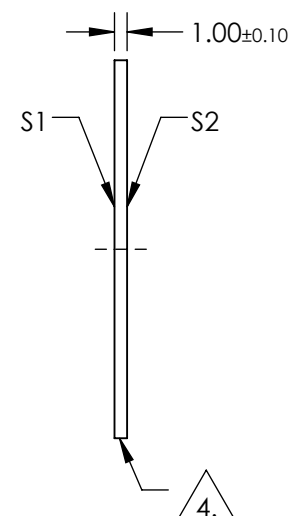
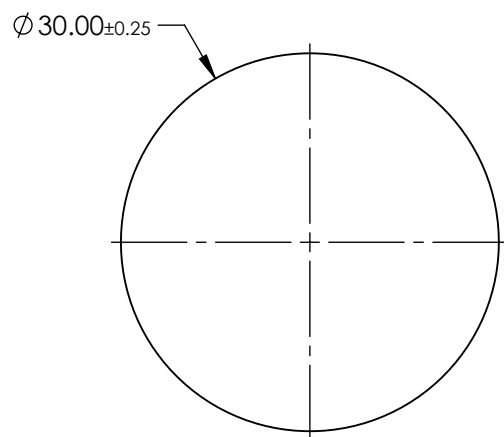
# NOTES:

1. SUBSTRATE: OPTICAL GRADE SAPPHIRE (Al<sub>2</sub>O<sub>3</sub>)
2. SURFACE S2 TO BE PARALLEL TO SURFACE S1 TO WITHIN <3.5 ARCMIN
3. COATING (APPLY ACROSS COATING APERTURE):

S1 & S2: R(AVG) ≤ 0.25% @ 880nm  
R(AVG) ≤ 1.25% @ 400 - 870nm  
R(AVG) ≤ 1.25% @ 890 - 1000nm

4. GRIND SURFACE

5. RoHS: COMPLIANT



**FOR INFORMATION ONLY:  
DO NOT MANUFACTURE  
PARTS TO THIS DRAWING**

	S1	S2
SHAPE	PLANO	PLANO
SURFACE QUALITY	80-50	80-50
SURFACE FLATNESS @ 632.8nm	2λ	2λ
SURFACE ROUGHNESS (μm/in)	0.1	0.1
BIREFRINGENCE	0.008	0.008
CLEAR APERTURE	Ø27.00	Ø27.00
BEVEL	PROTECTIVE AS NEEDED	PROTECTIVE AS NEEDED

SPECIFICATIONS SUBJECT TO CHANGE WITHOUT NOTICE  
DIMENSIONS ARE FOR REFERENCE ONLY

**EO**® Edmund Optics®



THIRD ANGLE  
PROJECTION

TITLE

Window Saph 30 Dia VIS-NIR Ctd

ALL DIMS IN

mm

DWG NO

37702

SHEET  
1 OF 1