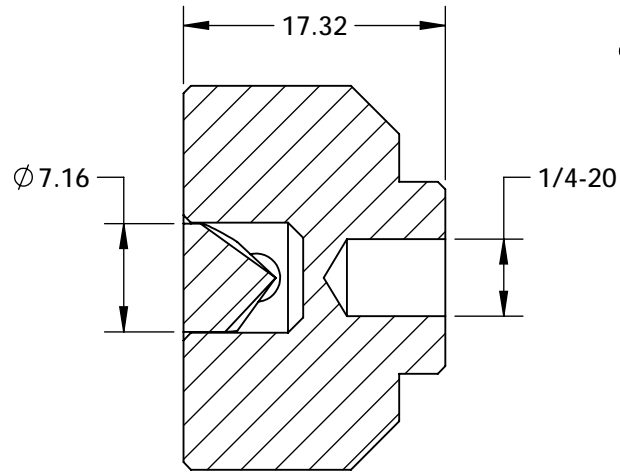
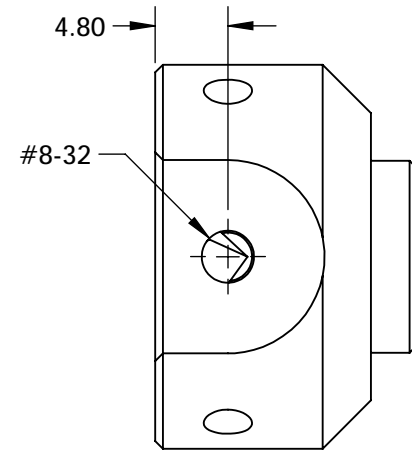
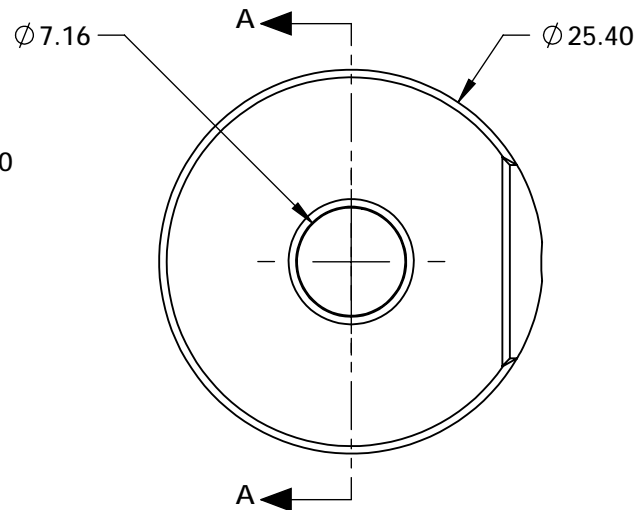


NOTES:

1. MATERIAL:  
HOUSING: BLACK ANODIZED ALUMINUM  
CORNER CUBE: N-BK7
2. COATING SPECIFICATION (APPLY ACROSS CLEAR APERTURE)  
REFLECTIVE SURFACES: R(ABS) > 97% @ 400 - 2500nm @ 0° AOI  
R(AVG) > 98% @ 400 - 2500nm @ 0° AOI  
ENTRANCE: Rabs ≤ 1.5% @ 750 - 800nm  
Rabs ≤ 1.0% @ 800 - 1550nm  
Ravg ≤ 0.7% @ 750 - 1550nm
3. RoHS: COMPLIANT



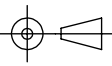
SECTION A-A



SPECIFICATIONS SUBJECT TO CHANGE WITHOUT NOTICE  
DIMENSIONS ARE FOR REFERENCE ONLY

**FOR INFORMATION ONLY:  
DO NOT MANUFACTURE  
PARTS TO THIS DRAWING**

**EO**® Edmund Optics®

THIRD ANGLE PROJECTION 		TITLE	7.16mm SILVER AND NIR II COATED, MOUNTED CORNER CUBE RETROREFLECTOR	
ALL DIMS IN	mm	DWG NO	12670	SHEET 1 OF 1